

CABIN CATALOGUE



FEATURES IN CABINS BUILT FOR MONTANA, WYOMING, UTAH & NORTH DAKOTA









**Trailside Structures** is a family owned company, dedicated to providing cabins with the convenience of a portable structure, while maintaining a high level of quality and value. We started with basic cabins and over the years we have added many options, including kitchens, bathrooms and bedrooms in a goal to provide a turnkey cabin. We specialize in building custom, so feel free to present your ideas, we look forward to working with you.



# Cabin Standard Features

*(Unless otherwise specified.)*

Disc lights included on all cabins

4' x 6' pressure treated base skids for foundation support

2' x 10' floor joists 16" OC with R-30 insulation

¾" tongue & groove OSB sub floor

COREtec® Pro Classics  
waterproof clip-n-lock luxury vinyl plank flooring

Vinyl sheet or Clip-n-lock LVP flooring available for bathrooms

2' x 6' exterior wall framing with R-21 insulation

4' x 4' Douglas Fir rafters (exposed)

4' OC with sunburst truss design every 8' - 12' of living space

1' x 6' Knotty Pine tongue & groove  
on ceiling above rafters & on interior walls

2' x 8' rafters 2' OC above tongue & groove  
with R-38 foam insulation

Entire interior wood sealed with latex based, clear finish

7/16" OSB on all sides under siding

House wrap moisture barrier under all siding types

ProVia insulated door, full glass *(with internal blinds)*

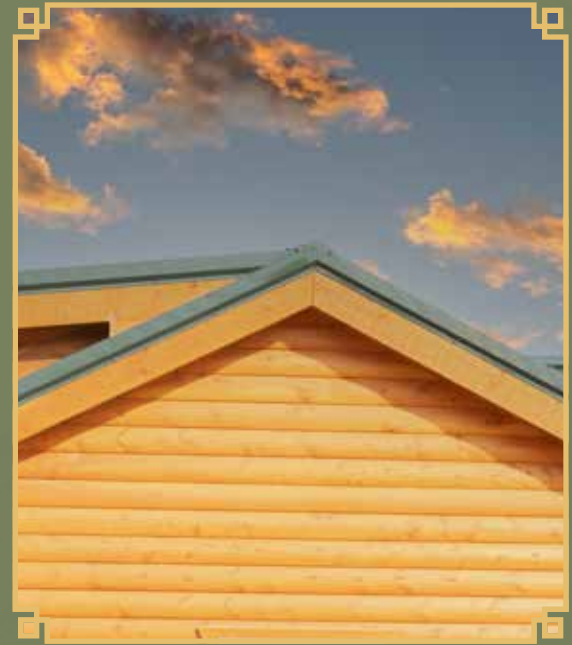
40-year painted steel roof

ProVia double-hung windows

6' porch with treated wood decking, log posts & railing *(on Applicable Cabins)*

Douglas Fir 2' x 6' tongue & groove loft floor, as well as log railings on lofts  
with a ladder. Includes ladder hardware brackets for safe, secure,  
and simple ladder mounting without fasteners.

*(Can be securely stored against wall when not in use.)*



## Standard Siding Features:

Stained/Sealed Log Siding

Stained/Sealed Cedar Lap Siding

Stained/Sealed Pine Board & Batten Siding

40 Year Painted Steel Siding

Metal Roofing And Siding Options Can Be Found  
At: **PROTECHSTEEL.COM**

Use The Visualizer To See The Color Options.

**LP Smartside** Lap Siding With Diamond Kote  
30-Year No-Fade Warranty Colors Can Be  
Found At: **WWW.DIAMONDKOTESIDING.COM**

## Standard Flooring Features:

COREtec® Pro Classics Clip-N-Lock  
Flooring Options Can Be Found At:  
**WWW.CORETECFLOORS.COM**



## Standard Bedroom Features:

Up To 16' Of Wall Framing 7' Tall

Internal Pine Door (Pocket Or Swing)

36" X 60" Egress & 30" X 40" Windows  
That Are Double Hung

Smoke Detector, Outlets To Code,  
Light Box And Switch

Bedrooms With Loft Above Include 2 Sconce  
Boxes On The Wall or 4 Disc Lights on Ceiling

Bedrooms With A Cathedral Ceiling Include  
1 Box For Fan & Light and 4 Disc Lights



## Standard Kitchen Features:

10 Linear Ft. Custom Hickory Base Cabinets  
With Full Extension Drawers And Soft-Close  
Door Hinges, Lazy Susan Counts As 4  
Linear Feet

**Wilsonart®** Laminate Counter-Top Color  
Options: [WWW.FABRICATORSUNLIMITED.COM](http://WWW.FABRICATORSUNLIMITED.COM)  
Look For Post-Form Laminate Color Options

**Moen** Double Bowl Kitchen Sink With  
Pull Out Faucet

All Plumbing And Connections Made To The  
Cabins Water And Sewer Lines

Code Electric Outlets Above The Counter-Top

110-Volt Fridge Outlet

110-Volt Microwave Outlet (Where Upper Bridge  
Cabinet Is Used)

220-Volt 50-Amp Range Plug

Light Box & Switch Above Kitchen Sink In Ceiling

## Standard Bathroom Features:

Bathroom Wall Framing Finished With Pine  
Tongue & Groove And Pine Interior Door, Up To  
7' Wall Height

Up To 10' Loft Over Bath Or Eliminate Rear Or  
Center Loft And Put Bath Walls Up To Cathedral  
Ceiling

48" X 34" Shower Or 60" X 30" Tub/Shower  
Combo, White

Elongated Toilet In Bathrooms Where Space  
Permits, Round Bowl Toilet In Others, White

30" Or 36" Hickory Vanity With  
Cultured Marble Top

**Moen** Fixtures And Faucets, Etc.

Electric, Tankless Water Heater

Exhaust Fan/Light In Ceiling and 24" X 24"  
Window, Outlet & Light Box Above Sink

All Plumbing Connections Made To The Cabin's  
Water And Sewer Lines

Trap Door In Floor For Plumbing Access

30 Gal. Electric W-H Available In Some Models  
At No Additional Cost



## Standard Electrical Features:

Cabins Wired By Professional, State Licensed  
Electrician

Disc Lighting Included in Cabin Interior

Code Outlets Throughout Entire Building

1 Outlet, 2 Lights, And 1 Switch In Loft

Exterior Weather Resistant Outlet By Each  
Exterior Door

Switch And External Light Box By Each  
Exterior Door

Smoke Detector (Connected)

Switch And Light Box Above Kitchen Sink  
And Lavatory (Where Applicable)

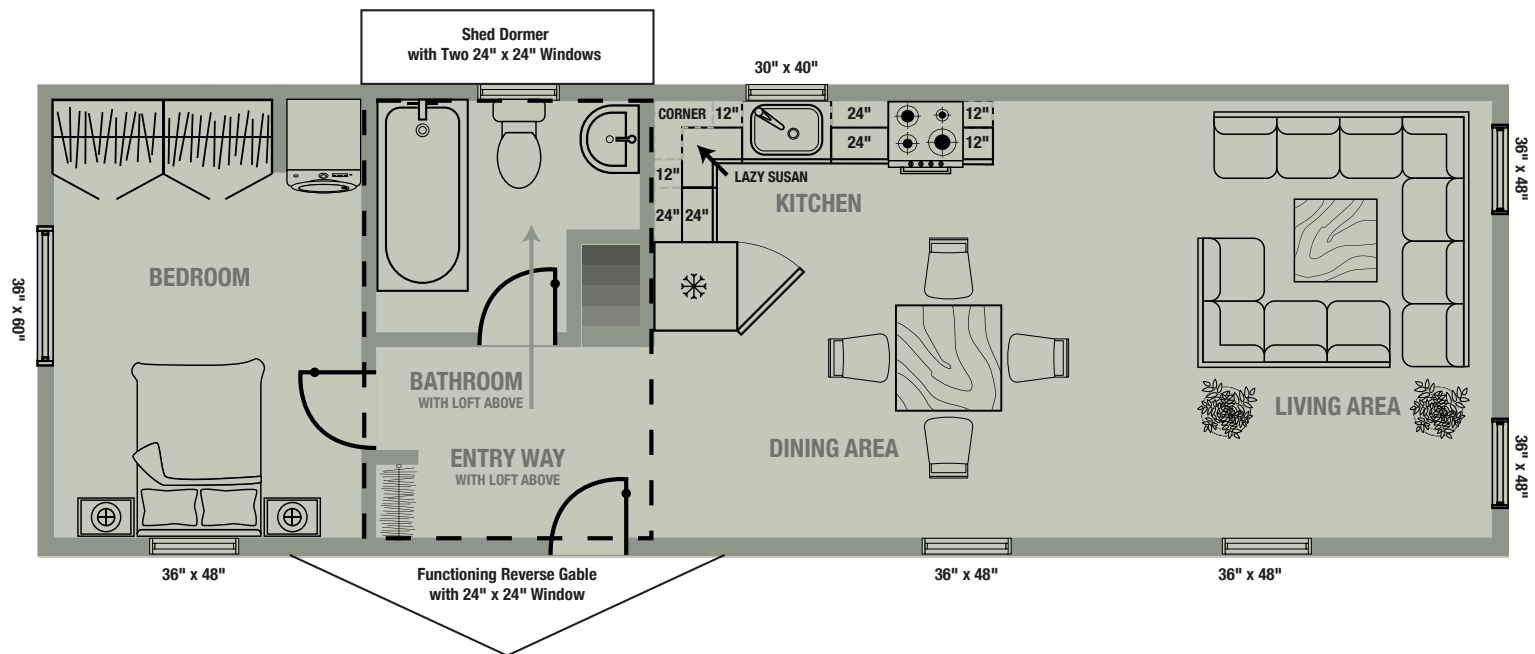
Disc Lights Now Included / Appliances Are Not  
100 Amp Panel Where Applicable

200 Amp Panel In Any Cabin That Has A  
Standard Tankless Electric Water Heater

3-Way Switch To Living Room Light When  
Additional Exterior Doors Are Added



# YELLOWSTONE



This cabin features a functional reverse gable over the loft & above the entry door and a 10' shed dormer with two windows on the other side of the cabin. There is a spacious living area, bedroom, kitchen and bathroom.

*Additional Options Available.*



A photograph of a single-story wooden cabin with a snow-covered roof, set in a winter landscape. The cabin has several windows and a white door. In the foreground, there are snow-covered bushes and a small evergreen tree. The background features a snow-capped mountain and a dark sky filled with stars and the Milky Way. A green box with the word 'YELLOWSTONE' in white capital letters is positioned in the upper right corner of the image.

## YELLOWSTONE

### Kitchen

The kitchen includes beautiful hickory cabinets with 12' of base cabinets plus a Lazy Susan and 7' of wall cabinets with a corner cabinet & bridge cabinet. There is a laminate counter-top and double basin sink with faucet & all plumbing included. The kitchen is wired for a refrigerator, range, microwave, above counter outlets and a light above the sink.

### Bedroom

The bedroom package has a cathedral ceiling, a small closet, and two windows. There is a smoke detector, outlets and a light box compatible for a fan/light with a switch.

### Bathroom

The bathroom includes a shower, toilet, hickory vanity with solid surface top, and fixtures. An electric tankless water heater, exhaust fan/light in ceiling, outlet and light box with the vanity and washer/dryer hookups are all included. There is also a 24" x 24" window.

### Lofts

This cabin includes a loft over the bath with a stairway for access. The stairs have drawers for storage and a storage area under the steps with a small door.

### Electric

Standard electric to code including electric heat with three available options from which to choose.



## BRIDGER



### Kitchen

The kitchen includes beautiful hickory cabinets with 10' of base cabinets and 7' of wall cabinets with a bridge cabinet. There is a laminate counter-top and double basin sink with faucet & all plumbing included. The kitchen is wired for a refrigerator, range, microwave, above counter outlets and a light above the sink.

### Bedroom

The large bedroom includes the standard features with a closet in 16' wide cabins. There is a smoke detector, outlets and two sconce boxes on the walls.

### Bathroom

The bathroom includes a shower, toilet, hickory vanity with solid surface top, and fixtures. An electric tankless water heater, vent fan/light in ceiling, outlet and light box with the vanity, a 24" x 24" window and washer/dryer hookups are also included.

### Lofts

There is a loft over the bedroom, bathroom & hallway with log railings and a stairway with drawers for added storage.

### Electric

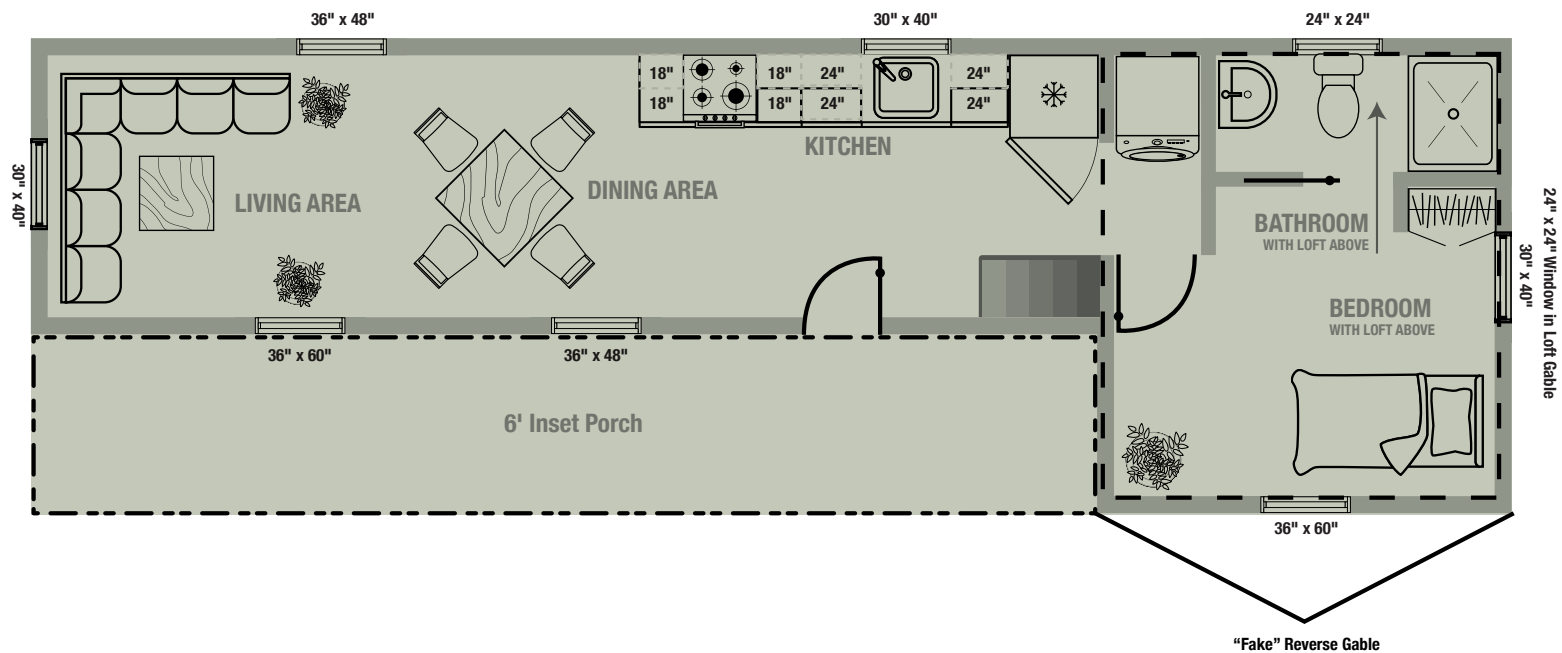
Standard electric to code including electric heat with three available options from which to choose.

### Porch

4' inset porch on 14' wides or 6' inset porch on 16' wides both with log railings



# BRIDGER

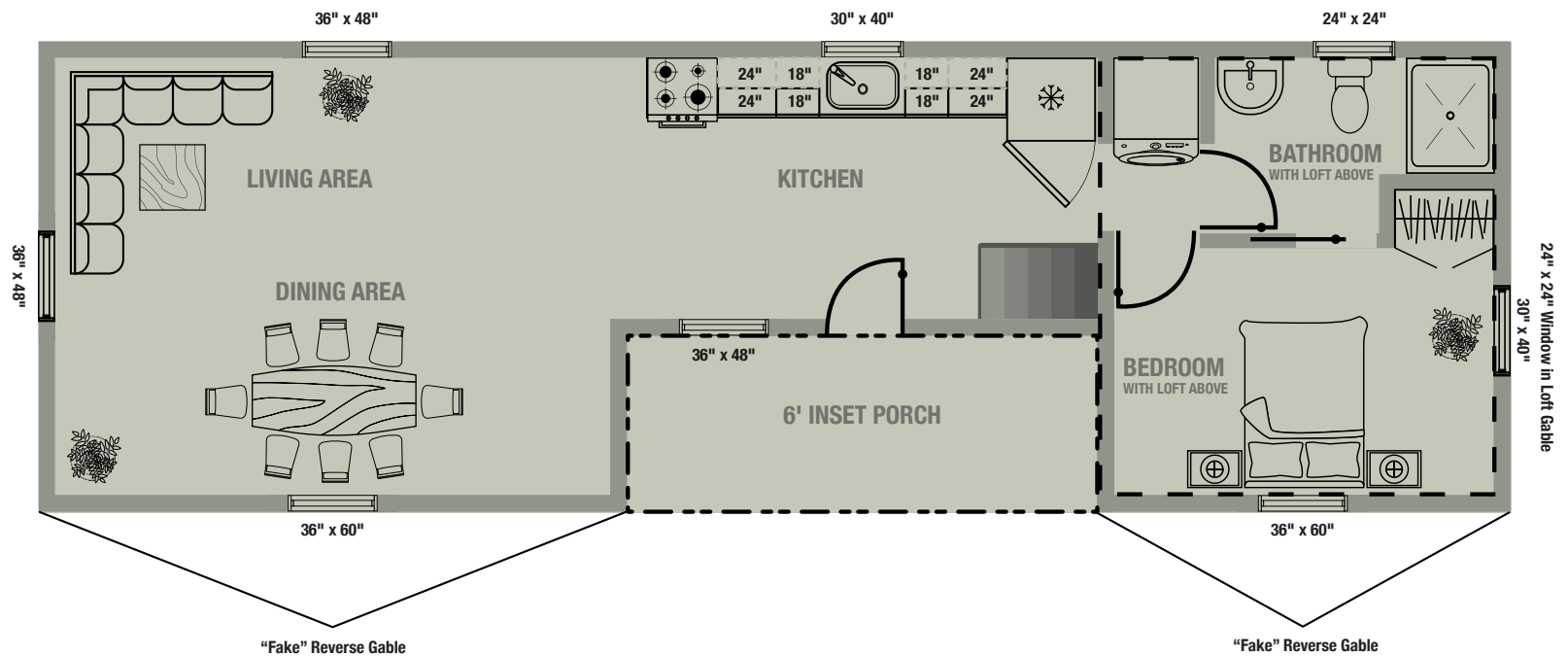


This cabin features one large "fake" reverse gable and an inset porch. There is a spacious great room, a bedroom with loft above, a kitchen and bathroom.

*Additional Options Available.*



# TETON



The Teton cabin features two large "fake" reverse gables, an inset porch and a loft.

There is a spacious living area, a bedroom, bathroom and kitchen included.

*Additional Options Available.*





### Kitchen

The kitchen includes beautiful hickory cabinets with 10' of base cabinets and 7' of wall cabinets with a bridge cabinet. There is a laminate counter-top and double basin sink with faucet & all plumbing included. The kitchen is wired for a refrigerator, range, microwave, above counter outlets and a light above the sink.

### Bedroom

The large bedroom includes the standard features with a closet in 16' wide cabins. There is a smoke detector, outlets and a light box compatible for a fan/light with a switch.

### Bathroom

The bathroom includes a shower, toilet, hickory vanity with solid surface top, and fixtures. An electric tankless water heater, vent fan/light in ceiling, outlet and light box by the vanity, a 24" x 24" window and washer/dryer hookups are also included.

### Lofts

There is a loft over the bedroom, bathroom & hallway with log railings and a stairway with drawers for added storage.

### Electric

Standard electric to code including electric heat with three available options from which to choose.

### Porch

4' inset porch on 14' wides or 6' inset porch on 16' wide





## ABSAROOKEE

### Kitchen

The kitchen includes beautiful hickory cabinets with 8 ½ ' of base cabinets, 2' pantry, and 5 ½ ' of wall cabinets with a bridge cabinet. There is a laminate counter-top and double basin sink with faucet & all plumbing included. The kitchen is wired for a refrigerator, range, microwave, above counter outlets and a light above the sink.

### Lofts

There is a loft over the small bedroom, bathroom & hallway with standard ladder for access.

### Bedroom

The large bedroom includes the standard features with a closet and shelves plus double barn doors for access. There is another small bedroom beside the bathroom as well. There are smoke detectors, outlets and light boxes compatible for a fan/light with switches.

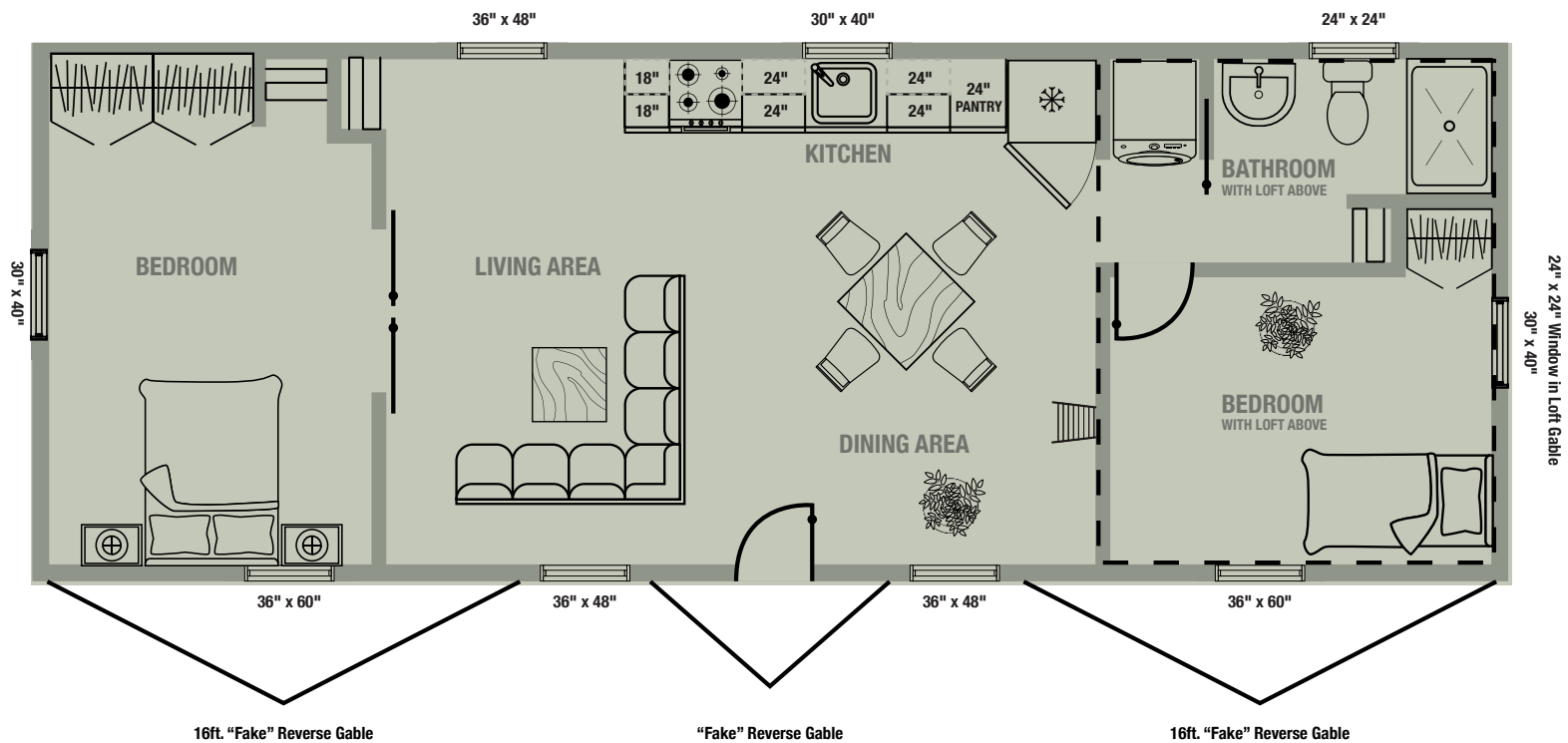
### Electric

Standard electric to code including electric heat with three available options from which to choose.

### Bathroom

The bathroom includes a shower, toilet, hickory vanity with solid surface top, and fixtures. An electric, tankless water heater, vent fan/light in ceiling, outlet and light box with the vanity, and washer/dryer hookups are all included. There is also a 24" x 24" window, and vent fan.

# ABSAROKEE



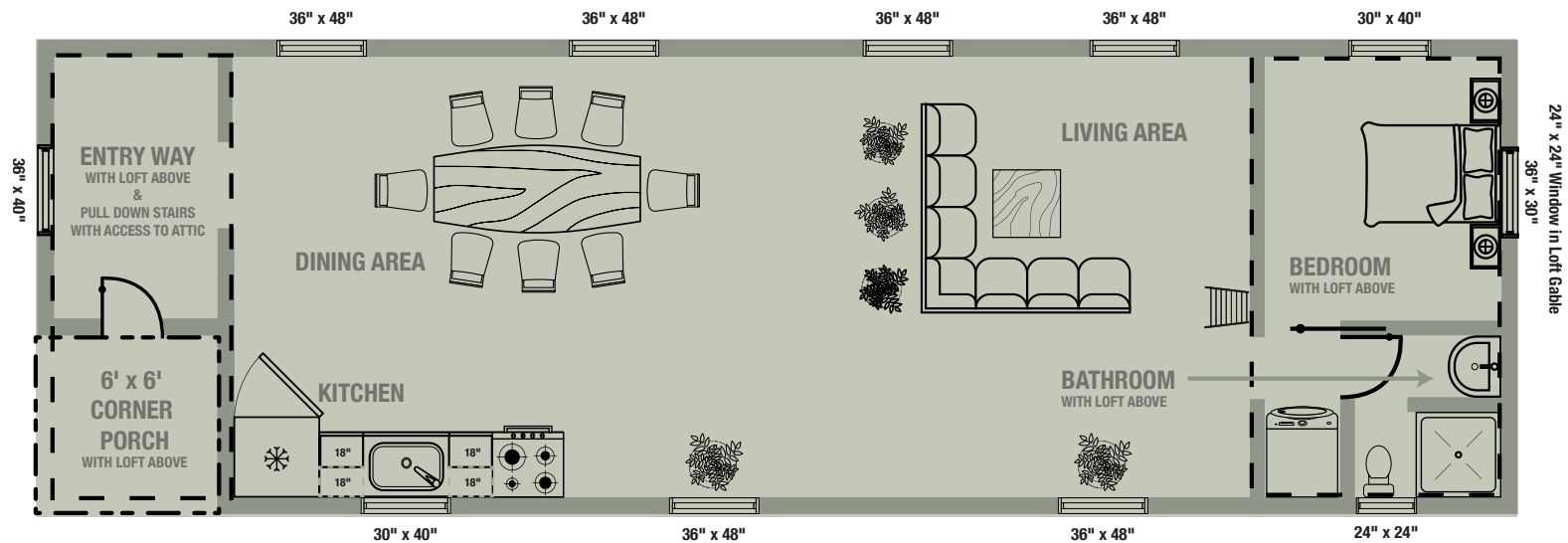
The Absarokee cabin features two large "fake" reverse gables and one small "fake" reverse gable above the entry door.

There is a spacious living area with shelves for extra storage, two bedrooms, a kitchen, bathroom and a loft.

*Additional Options Available.*



# TINY HOUSE



This feature-loaded cabin house comes with a corner porch, 2 lofts, a bedroom, bathroom, kitchen and spacious living area.

*Additional Options Available.*



## TINY HOUSE

### Kitchen

The kitchen includes beautiful hickory cabinets, 6' of base cabinets and 3' of upper cabinets, plus a bridge cabinet. There is a laminate counter-top and double basin sink with faucet & all plumbing included. The kitchen is wired for a refrigerator, range, microwave, above counter outlets and a light above the sink.

### Bedroom

The bedroom package includes the standard bedroom features with two windows. There is a smoke detector, outlets and two sconce boxes on the walls.

### Bathroom

The bathroom includes a 3'x3' shower, 2' vanity, toilet and a 24" x 24" window. The Hickory vanity has a solid surface top, outlet and light box above. An electric, tankless water heater and washer/dryer hookups are included along with a light/vent fan in the ceiling

### Electric

Standard electric to code including electric heat with three available options from which to choose.

### Lofts

There is a loft above the entrance area & porch with log railings and a pull-down ladder for access.

The second loft is above the bedroom, bathroom and hallway. It has log railings and a standard ladder.





## GLACIER



### Kitchen

Beautiful hickory cabinets, 12' of base cabinets with a lazy Susan and 7' upper cabinets, plus corner and bridge cabinet. Includes counter top and double basin sink with faucet and all plumbing. The kitchen is wired for a refrigerator, range, microwave, above counter outlets and a light above the sink.

### Bedroom

The bedroom package includes a cathedral ceiling, a closet with storage above, shelves, two windows, smoke alarm, receptacles, and a light box compatible with light and fan.

### Bathroom

The bathroom includes a shower or shower/tub combo, toilet, 30" or 36" hickory vanity with solid surface top and faucet. An electric, tankless water heater, washer and dryer hookups, 24" x 24" window. The vanity is wired for a light box, switch, and outlet - the light is not included.

### Electric

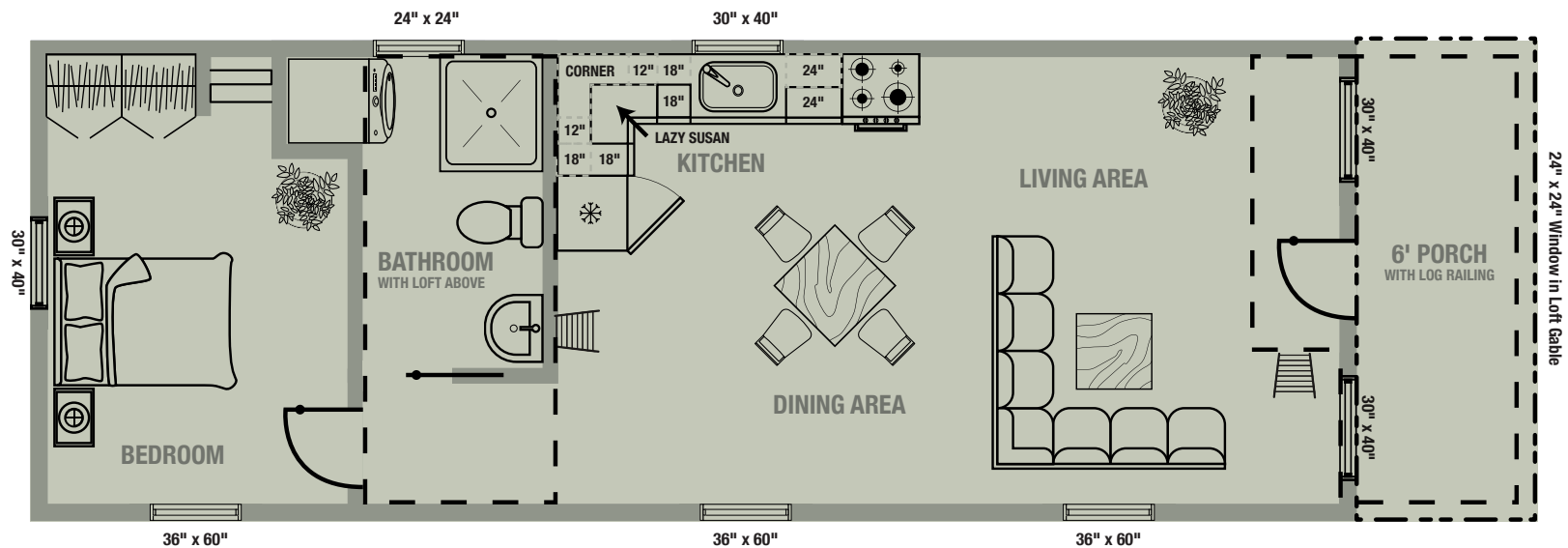
Standard electric to code including electric heat with three available options from which to choose.

### Lofts

There is a loft above the porch with a window, light box and outlet, and a ladder for access.

There is another a loft above the bathroom and hallway with log railings and ladder for access.

# GLACIER

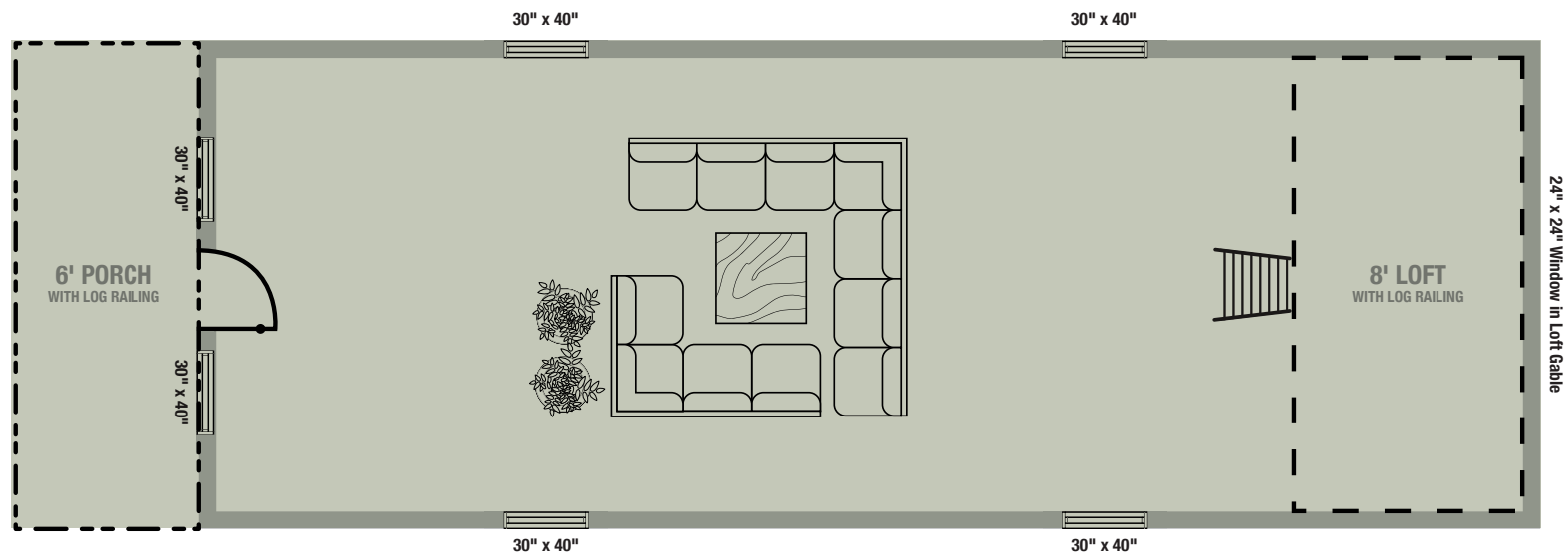


The Glacier cabin includes a porch, kitchen, bathroom, bedroom, two lofts and spacious living area.

*Additional Options Available.*



# DEARBORN



Our most basic cabin, a great choice for an economical get-away, or hunting cabin.

It's the perfect do-it-yourself project that you can customize to suit your needs.

The Dearborn comes fully-insulated, wired, heated, with 8' loft porch.

*Additional Options Available.*



### Interior

A spacious open interior allows for creativity when laying out your cabin.

### Loft

A single 8' loft with a window, log railings, and a ladder for access.

### Electric

Disc lights throughout the cabin. Standard electric to code including electric heat with three available options from which to choose.

### Porch

6' porch with log railing.



**CUSTOMIZE**

# STAINS

**Cedar Canyon**

**Cedar Natural**

**Canyon Brown**

# SIDING

CUSTOMIZE



STAINED/SEALED  
LOG



STAINED/SEALED  
CEDAR LAP



STAINED/SEALED  
PINE BOARD & BATTEN



PAINTED STEEL  
40 YEAR



LP SMARTSIDE LAP SIDING  
W/ DIAMOND KOTE  
30 YR NO-FADE WARRANTY

# ROOFING



TUFF RIB



RUGGED RIB

Metal roofing & siding options can be found at:

**PROTECHSTEEL.COM**

Use the visualizer to see the color options.



CUSTOMIZE

# PORCHES

Open Sunburst Truss  
(Pictured)



Detachable A-Frame  
Side Deck with Roof



Covered Shed



Roofless Side Deck



Inset



# DORMERS

**CUSTOMIZE**



**WINDOWLESS FAKE REVERSE GABLE**



**SHED DORMER - EXTERIOR**



**FUNCTIONING REVERSE GABLE & WINDOW**



**SHED DORMER - INTERIOR**



**CUSTOMIZE**

# KITCHENS



**Linear Kitchen**



**L-Shaped Kitchen**

# KITCHENS

CUSTOMIZE



MOEN STANDARD KITCHEN SINK



OPTIONAL PENINSULA



DISHWASHER SPACE



PANTRY



STANDARD KNOBS



VINYL FLOORING



WILSONART  
LAMINATE COUNTERTOP



CUSTOMIZE

# BATHROOMS

3' x 4' Shower  
(Pictured)

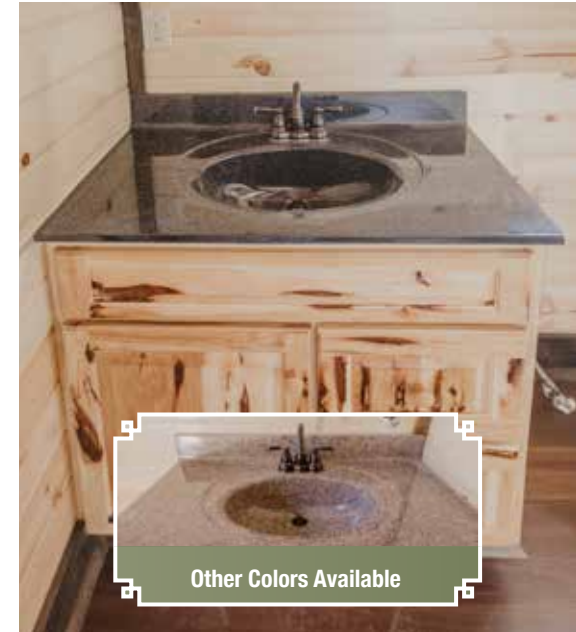
5' Tub & Shower

# BATHROOMS

CUSTOMIZE



VANITY WITH DOUBLE BASIN & MOEN FIXTURES



SINGLE HICKORY VANITY



CORETEC PRO CLASSICS  
WATERPROOF CLIP-N-LOCK  
LUXURY VINYL PLANK



VINYL FLOORING



TOILET



TRAP DOOR



EXHAUST FAN & LIGHT



CUSTOMIZE

# LOFTS

Optional Stain  
(Pictured)



Standard Ladder



Pull Down



# INTERIOR

CUSTOMIZE



STAINED TRIM



BLUE STAINED PINE



SUNBURST TRUSS



STAINED WAINSCOTING



CUSTOMIZE

# CLOSETS



# UTILITIES

CUSTOMIZE



IN WALL HEATERS



COVE HEATERS



BASEBOARD HEATERS



TANKLESS  
ELECTRIC  
WATER HEATER



WASHER & DRYER  
HOOKUPS

# STORAGE



STAIRS WITH DRAWERS  
BETWEEN TREADS



STAIRS WITH  
SMALL STORAGE



EXTRA SHELVES



**CUSTOMIZE**



# WINDOWS

**ProVia windows with  
Low-E 180 glass, argon gas insulated.  
Double hung (no grids)  
Clay is the standard color  
(Pictured)**

# DOORS

CUSTOMIZE



Full Glass



Wood Screen



Barn Style



Swinging



Pocket





## Cabin Rules:

Watch the sunrise,

Take long walks,

Sit on the porch,

Breathe deeply,

Relax & unwind,

Look at the stars,

Enjoy the fresh air!



**800-655-5322**

**TrailsideStructures.com**

**Sales@TrailsideStructures.com**