

CABIN CATALOGUE



 **Trailside**
STRUCTURES, LLC
FEATURES IN CABINS BUILT FOR IDAHO



Trailside Structures is a family owned company, dedicated to providing cabins with the convenience of a portable structure, while maintaining a high level of quality and value. We started with basic cabins and over the years we have added many options, including kitchens, bathrooms and bedrooms in a goal to provide a turnkey cabin. We specialize in building custom, so feel free to present your ideas, we look forward to working with you.



Cabin Standard Features

(Unless otherwise specified.)

4' x 6' pressure treated base skids for foundation support

2' x 10' floor joists 16" OC with R-30 insulation

3/4" tongue & groove OSB sub floor

COREtec Pro Plus

waterproof clip-n-lock luxury vinyl plank flooring

Vinyl sheet or Clip-n-lock LVP flooring available for bathrooms

2' x 6' exterior wall framing with R-21 insulation

4' x 4' Douglas Fir rafters *(exposed)*

4' OC with sunburst truss design every 8' - 12' of living space

1' x 6' Knotty Pine tongue & groove
on ceiling above rafters & on interior walls

2' x 8' rafters 2' OC above tongue & groove
with R-38 foam insulation

Entire interior wood sealed with latex based, clear finish

7/16" OSB on all sides under siding

House wrap moisture barrier under all siding types

Insulated full lite door *(with internal blinds)*

40-year painted steel roof

PlyGem 200 series windows with Low-E 180 glass,
argon gas insulated, clay color, single hung *(no grids)*

6' porch with treated wood decking, log posts & railing

Douglas Fir 2' x 6' tongue & groove loft floor, as well as log
railings on lofts with a ladder. Includes ladder hardware
brackets for safe, secure, and simple ladder mounting
without fasteners.

(Can be securely stored against wall when not in use.)

ATTENTION IDAHO CUSTOMERS:

Additional charges may apply depending on
snow & wind load requirement and added
dormers etc. These prices are good for up to
110 lb. snow loads.

The floors in Idaho cabins come uninsulated
which may be done on site by a local contractor
after the cabin is delivered.

All plumbing will be stubbed straight down
through the floor from each fixture. These will
need to be connected on site by a local plumber.

Idaho cabins will need to be placed on either
crawl space or basement foundations.

Standard Siding Features:

Stained/sealed log siding

Stained/sealed cedar lap siding

Stained/sealed pine board & batten siding

40- Year painted steel siding

Metal roofing and siding options can be
found at: **PROTECHSTEEL.COM**.
Use the visualizer to see the color options.

LP SmartSide lap siding with Diamond
Kote 30-Year no-fade warranty.

Standard Flooring Features:

Clip-n-lock LVP flooring options can be
found at: **CORTECFLOORS.COM**.

Vinyl flooring options for bathrooms can be
found at: **HOMEDEPOT.COM**.
Look for vinyl flooring color options
up to \$2.50 per sq. ft.

Standard Bedroom Features:

Up to 16' of wall framing

7' tall Internal pine door (pocket or swing)

36" x 60" egress and 30" x 40" windows
that are single hung

Smoke detector, outlets to code, light box
and switch

Bedrooms with loft above include 2 scone
boxes on the wall

Bedrooms with cathedral ceiling include
1 box for fan & light



Standard Kitchen Features:

10 linear ft. custom hickory base cabinets
with full extension drawers and soft-close
door hinges, lazy susan counts as 4
linear feet

Wilsonart laminate counter-top in "Winter
Carnival" unless otherwise specified

Glacier Bay double bowl kitchen sink with
pull out faucet

All plumbing and connections made to the
cabins water and sewer lines

Code electric outlets above the counter-top

110-volt fridge outlet

110-volt microwave outlet (where upper
bridge cabinet is used)

220-volt 50-amp range plug

Light box above kitchen sink in ceiling
with switch

Standard Bathroom Features:

Bathroom wall framing finished with pine
tongue & groove and pine interior door, up
to 7' wall height

Up to 10' loft over bath or eliminate rear
or center loft and put bath walls up to
cathedral ceiling

48" x 34" shower or 60" x 30" tub/shower
combo, white

Elongated toilet in bathrooms where space
permits, round bowl toilet in others, white

30" or 36" hickory vanity with
solid surface top

Glacier Bay fixtures and faucets, etc.

Electric, tankless water heater

Exhaust fan/light in ceiling & 24" x 24"
window, outlet and light box above sink

All plumbing connections made to the
cabin's water and sewer lines

Trap door in floor for plumbing access

30 gal. electric W-H available in some
models at no additional cost



Standard Electrical Features:

Electric heat with three options from which
to choose

Cabins wired by professional MT state
licensed electrician

Code outlets throughout entire building

At least 1 outlet in loft

Exterior weather resistant outlet by each
exterior door

Light switches and boxes

Smoke detector (connected)

Switch and external light box by each
exterior door

Switch and light box above kitchen sink
and vanity (where applicable)

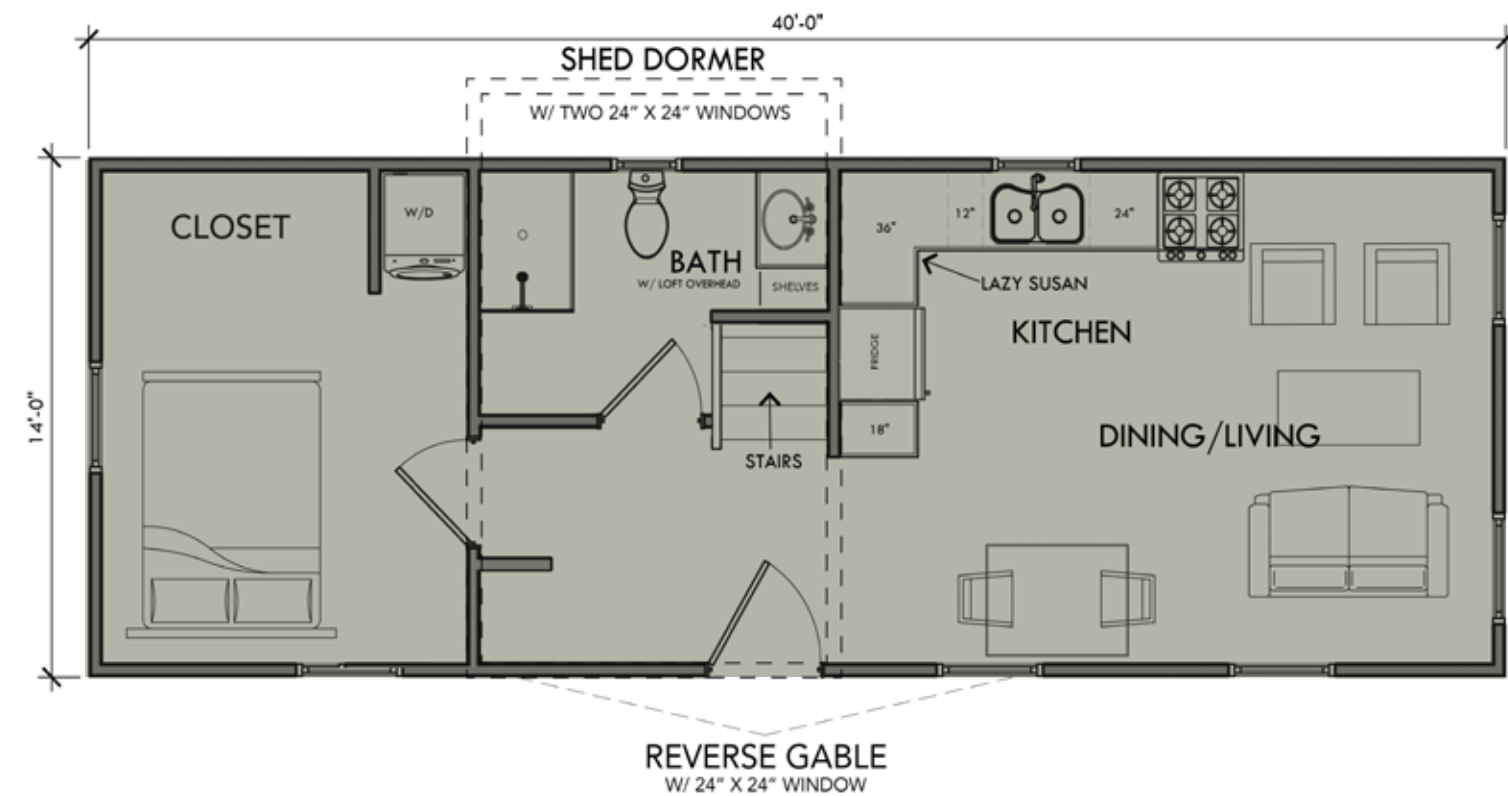
Lights and appliances are not included
with cabins

100 or 200 amp panel depending on the
amount of electrical required

3-way switch to living room light if additional
exterior door is added



YELLOWSTONE



This cabin features a functional reverse gable over the loft & above the entry door and a 10' shed dormer with two windows on the other side of the cabin. There is a spacious living area, bedroom, kitchen and bathroom.

Additional Options Available.

YELLOWSTONE

Kitchen

The kitchen includes beautiful hickory cabinets with 11 ½ ' of base cabinets plus a Lazy Susan and 6 ½ ' of wall cabinets with a corner cabinet & bridge cabinet. There is a laminate counter-top and double basin sink with faucet & all plumbing included. The kitchen is wired for a refrigerator, range, microwave, above counter outlets and a light above the sink.

Bedroom

The bedroom package has a cathedral ceiling, a small closet, and two windows. There is a smoke detector, outlets and a light box compatible for a fan/light with a switch.

Bathroom

The bathroom includes a shower, toilet, hickory vanity with solid surface top, and fixtures. An electric tankless water heater, exhaust fan/light in ceiling, outlet and light box with the vanity and washer/dryer hookups are all included. There is also a 24" x 24" window.

Lofts

This cabin includes a loft over the bath with a stairway for access. The stairs have drawers for storage and a storage area under the steps with a small door.

Electric

Standard electric to code including electric heat with three available options from which to choose.



BRIDGER

Kitchen

The kitchen includes beautiful hickory cabinets with 10' of base cabinets and 7' of wall cabinets with a bridge cabinet. There is a laminate counter-top and double basin sink with faucet & all plumbing included. The kitchen is wired for a refrigerator, range, microwave, above counter outlets and a light above the sink.

Bedroom

The large bedroom includes the standard features with a closet in 16' wide cabins. There is a smoke detector, outlets and a light box compatible for a fan/light with a switch.

Bathroom

The bathroom includes a shower, toilet, hickory vanity with solid surface top, and fixtures. An electric tankless water heater, vent fan/light in ceiling, outlet and light box with the vanity, a 24" x 24" window and washer/dryer hookups are also included.

Lofts

There is a loft over the bedroom, bathroom & hallway with log railings and a stairway with drawers for added storage.

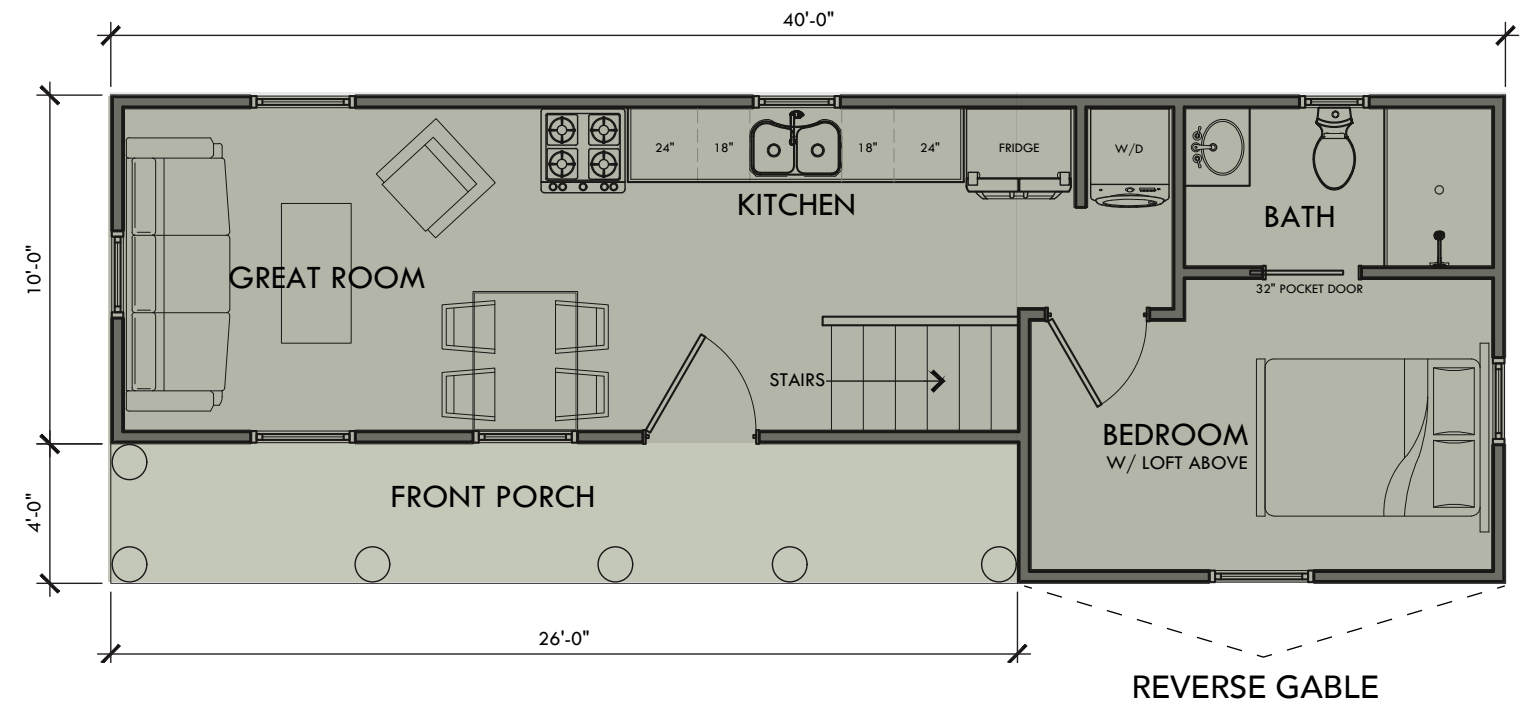
Electric

Standard electric to code including electric heat with three available options from which to choose.

Porch

4' inset porch on 14' wides or 6' inset porch on 16' wides both with log railings.

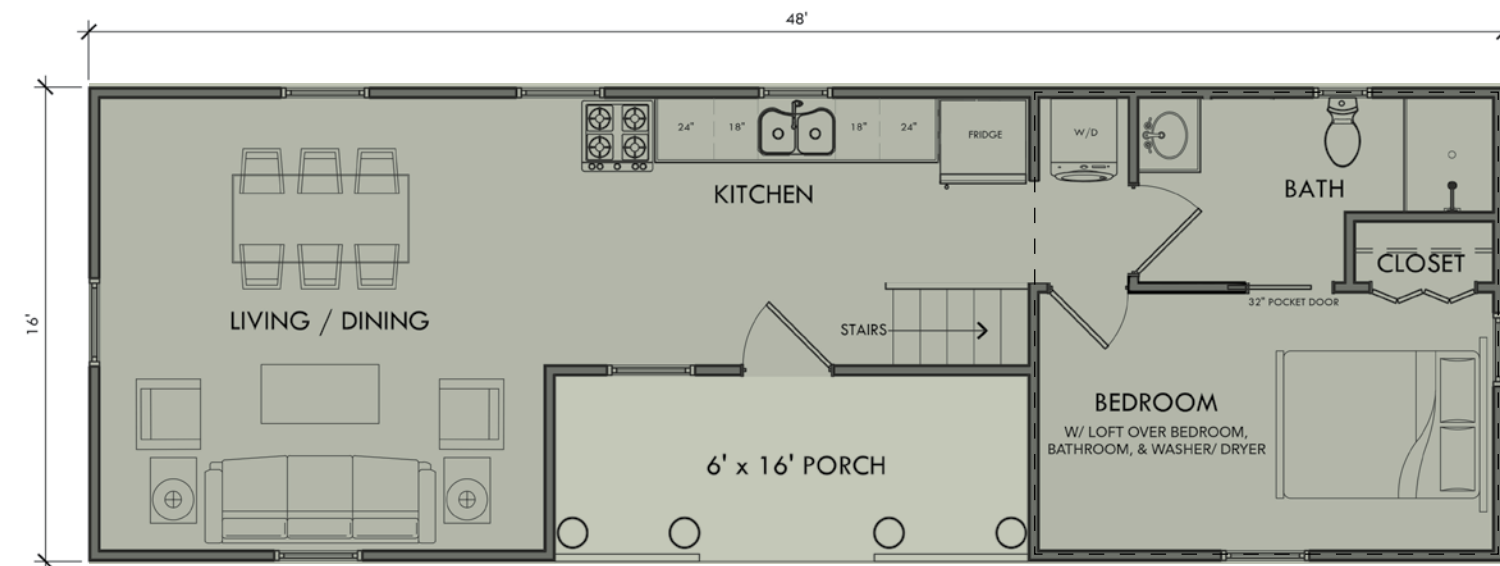
BRIDGER



This cabin features one large “fake” reverse gable and an inset porch. There is a spacious great room, a bedroom with loft above, a kitchen and bathroom.

Additional Options Available.

TETON



The Teton cabin features two large “fake” reverse gables, an inset porch and a loft.
There is a spacious living area, a bedroom, bathroom and kitchen included.

Additional Options Available.



TETON

Kitchen

The kitchen includes beautiful hickory cabinets with 10’ of base cabinets and 7’ of wall cabinets with a bridge cabinet. There is a laminate counter-top and double basin sink with faucet & all plumbing included. The kitchen is wired for a refrigerator, range, microwave, above counter outlets and a light above the sink.

Bedroom

The large bedroom includes the standard features with a closet in 16’ wide cabins. There is a smoke detector, outlets and a light box compatible for a fan/light with a switch.

Bathroom

The bathroom includes a shower, toilet, hickory vanity with solid surface top, and fixtures. An electric tankless water heater, vent fan/light in ceiling, outlet and light box by the vanity, a 24” x 24” window and washer/dryer hookups are also included.

Lofts

There is a loft over the bedroom, bathroom & hallway with log railings and a stairway with drawers for added storage.

Electric

Standard electric to code including electric heat with three available options from which to choose.

Porch

4’ inset porch on 14’ wides or 6’ inset porch on 16’ wide

ABSAROKEE



Kitchen

The kitchen includes beautiful hickory cabinets with 8 ½' of base cabinets, 2' pantry, and 5 ½' of wall cabinets with a bridge cabinet. There is a laminate counter-top and double basin sink with faucet & all plumbing included. The kitchen is wired for a refrigerator, range, microwave, above counter outlets and a light above the sink.

Lofts

There is a loft over the small bedroom, bathroom & hallway with standard ladder for access.

Bedroom

The large bedroom includes the standard features with a closet and shelves plus double barn doors for access. There is another small bedroom beside the bathroom as well. There are smoke detectors, outlets and light boxes compatible for a fan/light with switches.

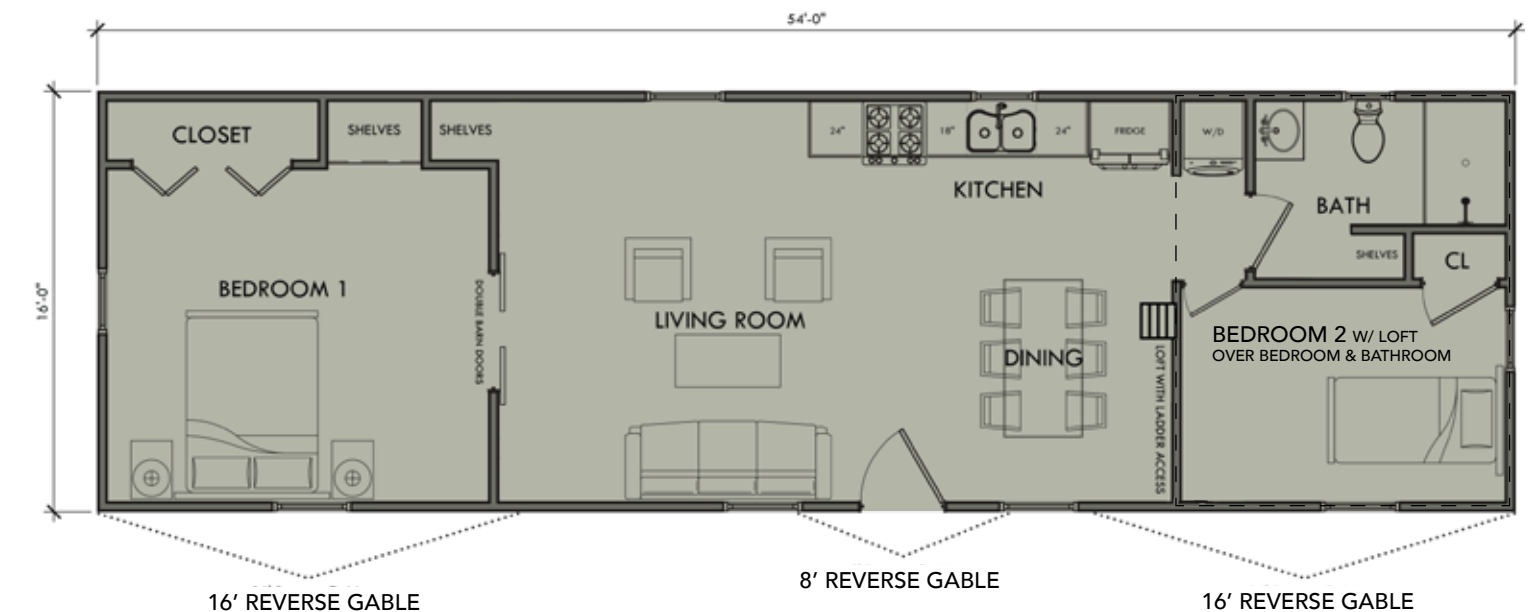
Bathroom

The bathroom includes a shower, toilet, hickory vanity with solid surface top, and fixtures. An electric, tankless water heater, vent fan/light in ceiling, outlet and light box with the vanity, and washer/dryer hookups are all included. There is also a 24" x 24" window, and vent fan.

Electric

Standard electric to code including electric heat with three available options from which to choose.

ABSAROKEE

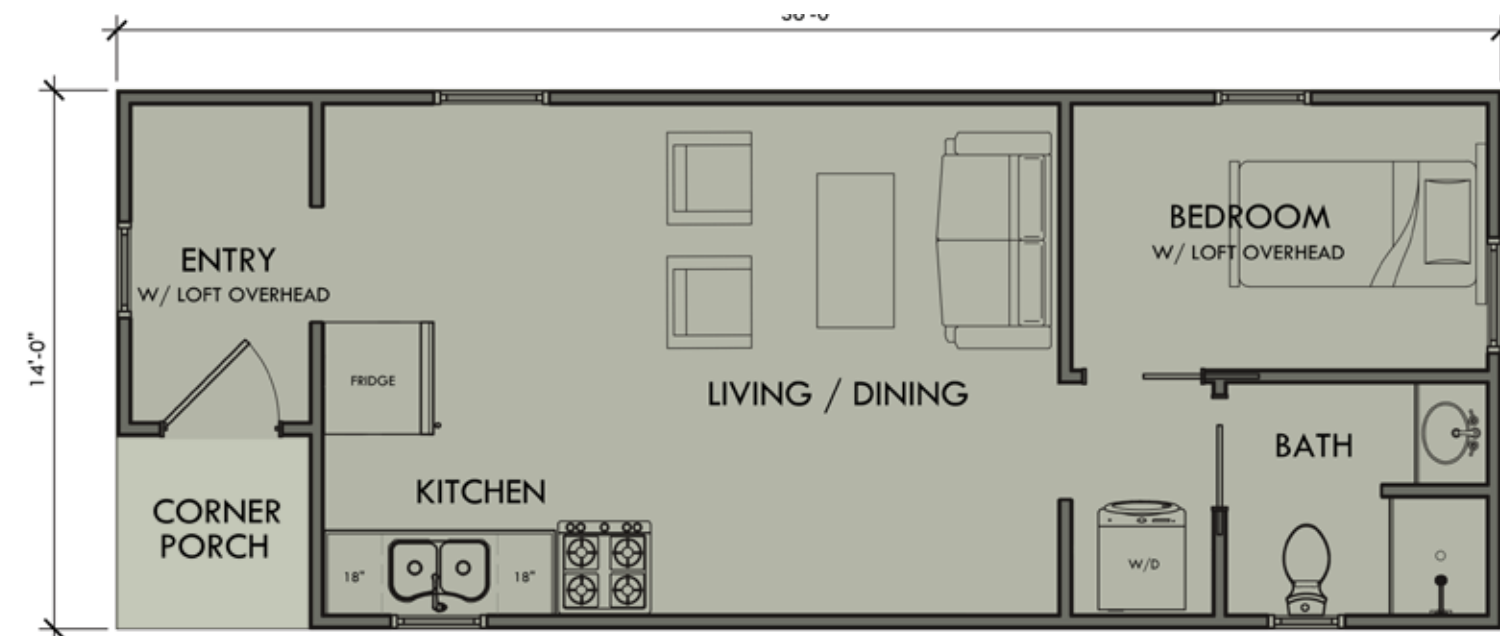


The Absarokee cabin features two large “fake” reverse gables and one small “fake” reverse gable above the entry door.

There is a spacious living area with shelves for extra storage, two bedrooms, a kitchen, bathroom and a loft.

Additional Options Available.

TINY HOUSE



This feature-loaded cabin house comes with a corner porch, 2 lofts, a bedroom, bathroom, kitchen and spacious living area.

Additional Options Available.

TINY HOUSE



Kitchen

The kitchen includes beautiful hickory cabinets, 6' of base cabinets and 3' of upper cabinets, plus a bridge cabinet. There is a laminate counter-top and double basin sink with faucet & all plumbing included. The kitchen is wired for a refrigerator, range, microwave, above counter outlets and a light above the sink.

Bedroom

The bedroom package includes the standard bedroom features with two windows. There is a smoke detector, outlets and a light box compatible for a fan/light with a switch.

Bathroom

The bathroom includes a 3'x3' shower, 2' vanity, toilet and a 24" x 24" window. The Hickory vanity has a solid surface top, outlet and light box above. An electric, tankless water heater and washer/dryer hookups are included along with a light/vent fan in the ceiling.

Electric

Standard electric to code including electric heat with three available options from which to choose.

Lofts

There is a loft above the entrance area & porch with log railings and a pull-down ladder for access.

The second loft is above the bedroom, bathroom and hallway. It has log railings and a standard ladder.



Kitchen

Beautiful hickory cabinets, 12' of base cabinets with a lazy Susan and 7' upper cabinets, plus corner and bridge cabinet. Includes counter top and double basin sink with faucet and all plumbing. The kitchen is wired for a refrigerator, range, microwave, above counter outlets and a light above the sink.

Bedroom

The bedroom package includes a cathedral ceiling, a closet with storage above, shelves, two windows, smoke alarm, receptacles, and a light outlet compatible with light and fan.

Bathroom

The bathroom includes a shower or shower/tub combo, toilet, 30" or 36" hickory vanity with solid surface top and faucet. An electric, tankless water heater, light above the vanity, an outlet by the vanity, washer and dryer hookups, 24" x 24" window, and a light/fan are all included.

Electric

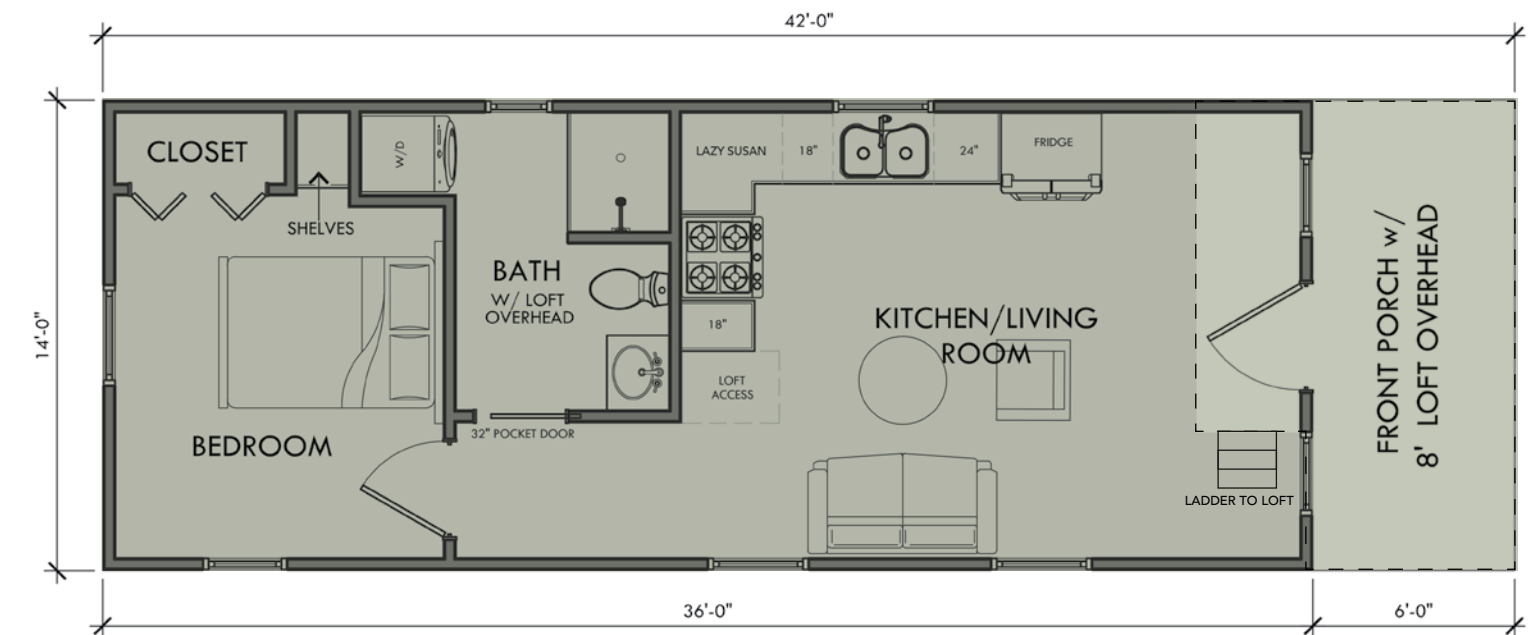
Standard electric to code including electric heat with three available options from which to choose.

Lofts

There is a loft above the porch with a window, light box and outlet, and a ladder for access.

There is another a loft above the bathroom and hallway with log railings and ladder for access.

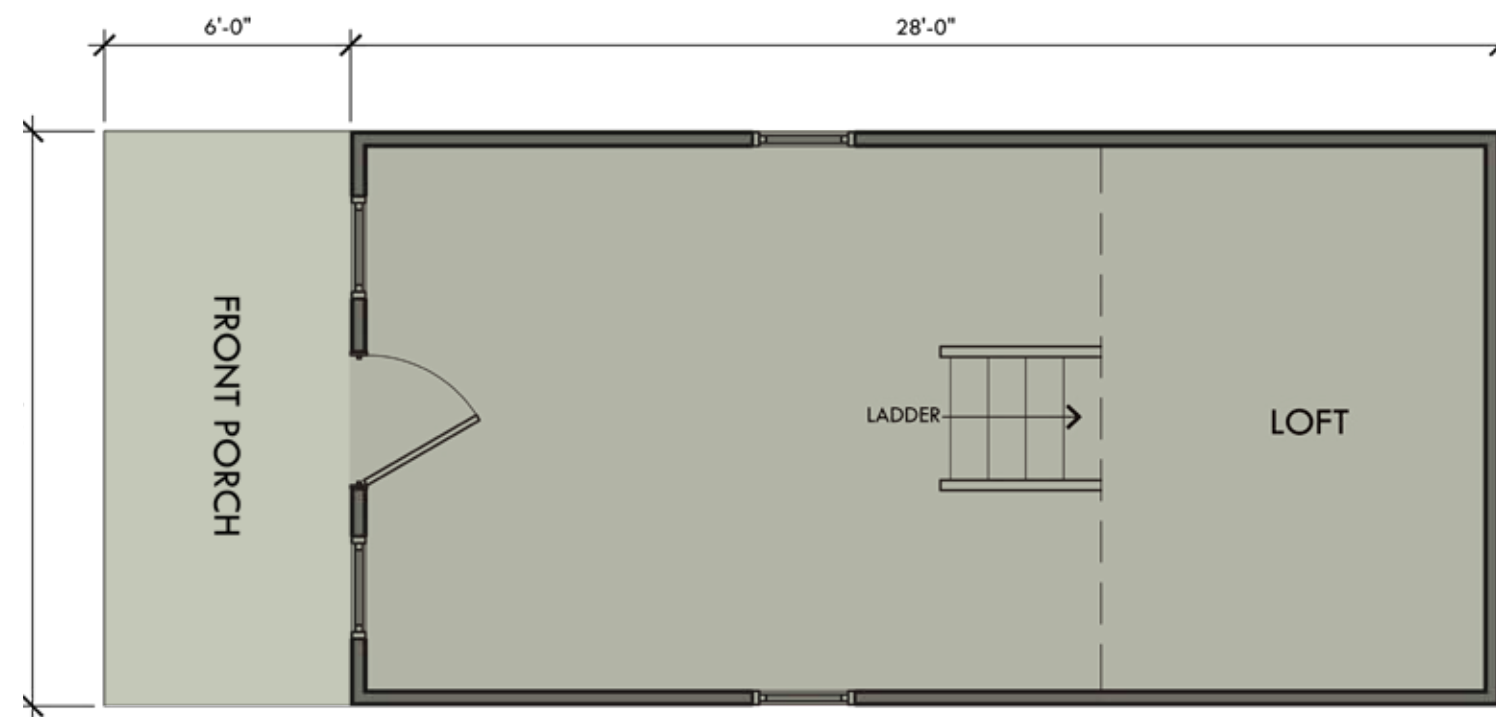
GLACIER



The Glacier cabin includes a porch, kitchen, bathroom, bedroom, two lofts and spacious living area.

Additional Options Available.

DEARBORN



Our most basic cabin, a great choice for an economical get-away, or hunting cabin.

It's the perfect do-it-yourself project that you can customize to suit your needs.

The Dearborn comes fully-insulated, wired, heated, with 8' loft porch.

Additional Options Available.



DEARBORN



Interior

A spacious open interior allows for creativity when laying out your cabin.

Loft

A single 8' loft with one regular outlet, light outlet, log railings, log ladder, and 24"x24" window.

Electric

Standard electric to code including electric heat with three available options from which to choose.

Porch

6' porch with log railing.



CUSTOMIZE

STAINS



Cedar Canyon



Cedar Natural



Canyon Brown

SIDING

CUSTOMIZE



STAINED/SEALED LOG



STAINED/SEALED CEDAR LAP



STAINED/SEALED PINE BOARD & BATTEN



PAINTED STEEL 40 YEAR

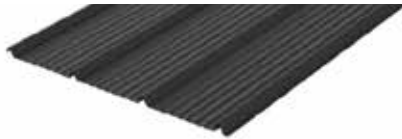


LP SMARTSIDE LAP SIDING W/ DIAMOND KOTE 30 YR NO-FADE WARRANTY

ROOFING



TUFF RIB



RUGGED RIB

Metal roofing & siding options can be found at:
PROTECHSTEEL.COM
Use the visualizer to see the color options.

CUSTOMIZE

PORCHES

Open Sunburst Truss
(Pictured)



Detachable A-Frame
Side Deck with Roof



Covered Shed



Roofless Side Deck



Inset

DORMERS

CUSTOMIZE



WINDOWLESS FAKE REVERSE GABLE



SHED DORMER - EXTERIOR



FUNCTIONING REVERSE GABLE & WINDOW



SHED DORMER - INTERIOR



KITCHENS



Linear Kitchen



L-Shaped Kitchen

KITCHENS

CUSTOMIZE



GLACIER BAY STANDARD KITCHEN SINK



OPTIONAL PENINSULA



DISHWASHER SPACE



PANTRY



STANDARD KNOBS



VINYL FLOORING



WILSONART
LAMINATE COUNTERTOP



CUSTOMIZE

BATHROOMS

3' x 4' Shower
(Pictured)



5' Tub & Shower

BATHROOMS

CUSTOMIZE



VANITY WITH DOUBLE BASIN & GLACIER BAY FIXTURES



SINGLE HICKORY VANITY



CORETEC PRO PLUS
WATERPROOF CLIP-N-LOCK
LUXURY VINYL PLANK



VINYL FLOORING



TOILET



TRAP DOOR



EXHAUST FAN & LIGHT



CUSTOMIZE

LOFTS

Optional Stain
(Pictured)



Standard Ladder



Pull Down

INTERIOR

CUSTOMIZE



STAINED TRIM



BLUE STAINED PINE



SUNBURST TRUSS



STAINED WAINSCOTING



CUSTOMIZE

CLOSETS



6 Foot



8 Foot

UTILITIES

CUSTOMIZE



IN WALL HEATERS



COVE HEATERS



BASEBOARD HEATERS



TANKLESS
ELECTRIC
WATER HEATER



WASHER & DRYER
HOOKUPS

STORAGE



STAIRS WITH DRAWERS
BETWEEN TREADS



STAIRS WITH
SMALL STORAGE



EXTRA SHELVES

CUSTOMIZE








WINDOWS

PlyGem 200 series windows with
Low-E 180 glass, argon gas insulated.
Single hung (no grids)
Clay is the standard color
(Pictured)

CUSTOMIZE

DOORS



Full Glass

Wood Screen

Barn Style

Swinging

Pocket



Cabin Rules:

Watch the sunrise,

Take long walks,

Sit on the porch,

Breathe deeply,

Relax & unwind,

Look at the stars,

Enjoy the fresh air!



800-655-5322

TrailsideStructures.com

Sales@TrailsideStructures.com