

PARK MODEL CATALOGUE



 **Trailside**  
STRUCTURES, LLC





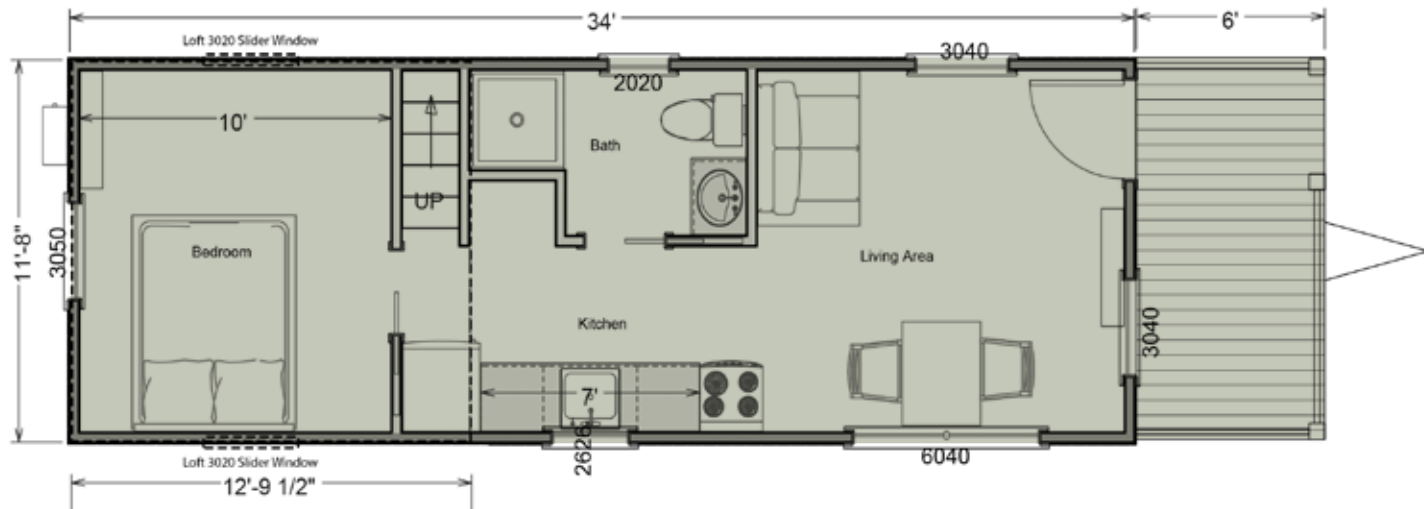




**Trailside Structures** is a family owned company, dedicated to providing cabins with the convenience of a portable structure, while maintaining a high level of quality and value. We started with basic cabins and over the years we have added many options, including kitchens, bathrooms and bedrooms in a goal to provide a turnkey cabin. We specialize in building custom, so feel free to present your ideas, we look forward to working with you.



# 1889



The 1889 Park Model is an ingenious blend of compact living and spacious design. This cabin features a clever loft space, open-concept living area, well-equipped kitchen, comfortable bedroom, and a generous sized porch, offering a versatile retreat for those who appreciate efficient yet roomy accommodations.

*Additional Options Available*





34' x 11'8" with 6' Porch

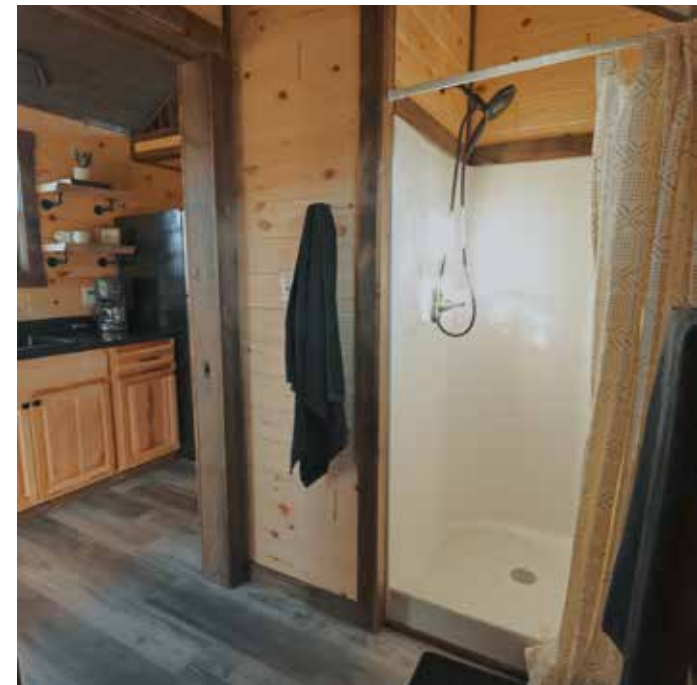
## Structural Exterior

- Treated 2" x 6" floor joists 24" o/c sheathed with ¾" subfloor
- Walls 2" x 4" 16" o/c sheathed with 7/16" OSB
- Roof designed for 60 lb snow load, Higher snow load available
- LP lap siding or Board & Batton Accent walls per print (Multiple colors)
- Rugged rib metal roof and fascia (Multiple colors)
- Removable hitch
- 6 hurricane tie downs
- 4" to 10" eaves per print
- Fiberon composite decking
- A/C disconnect
- GFCI outlet
- Frost free water faucet
- Deck per print
- Painted rebar railing
- Stained deck railing and posts



## Interior Features

- 100-amp electrical service
- 18 cu ft refrigerator/freezer
- Microwave
- 27 cu ft electric range, or induction cooktop
- 20 gallon water heater
- One piece shower
- Smoke detectors
- Fire extinguisher
- LED recessed lighting
- Exterior porch lights
- Accent lighting
- Porcelain residential toilet
- Luxury vinyl plank flooring (Multiple colors)
- T&G or shiplap on walls and ceiling (Multiple colors)
- Stained and sealed 1" x 4" trim (Multiple colors)
- Solid pine interior doors
- Delta brand faucets
- Bath vanity per print
- Kitchen per print (Multiple colors)
- Black single basin kitchen sink
- Laminate kitchen counter (Multiple colors)
- Optional stackable washer/dryer hookups





## Energy Saving Features

- R-14 2" spray foam in floor, walls, and ceiling
- Anderson 100 series windows (Multiple Colors)
- Ductless energy efficient AC/Heat
- Vapor barrier on roof and walls







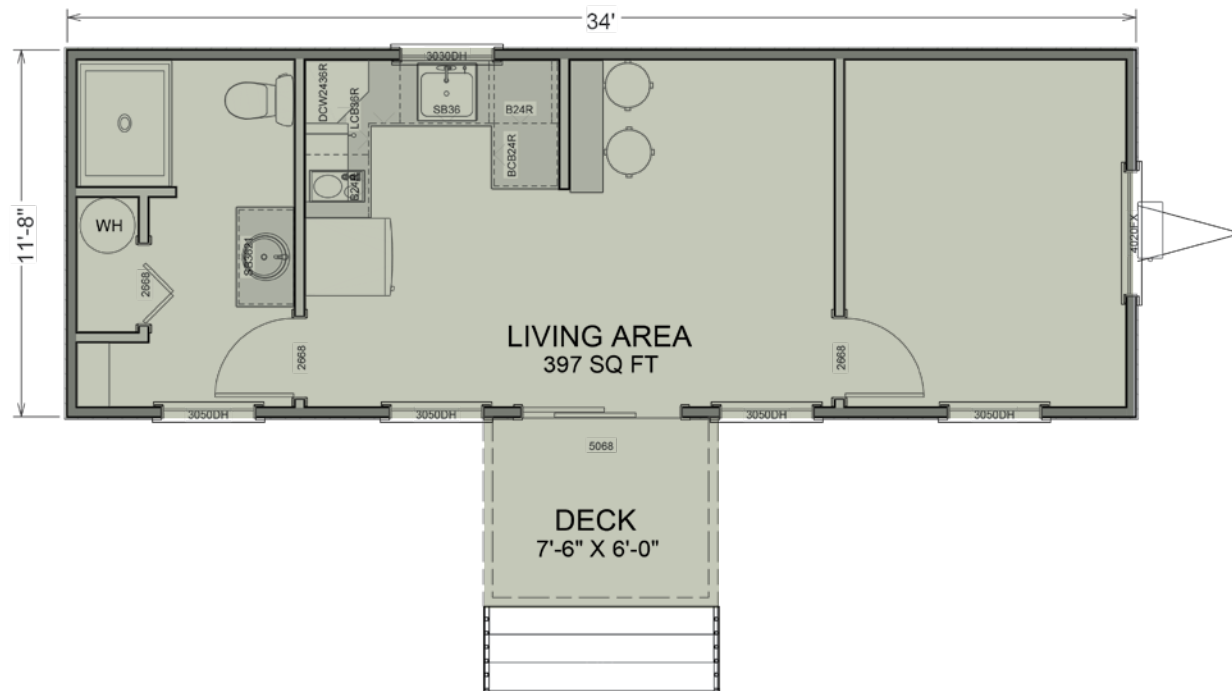
34' x 11'8" with 7'6" x 6'0" Deck

## Structural Exterior

- Treated 2" x 6" floor joists 24" o/c sheathed with ¾" subfloor
- Walls 2" x 4" 16" o/c sheathed with 7/16" OSB
- Roof designed for 60 lb snow load, Higher snow load available
- LP lap siding or Board & Batton Accent walls per print (Multiple colors)
- Rugged rib metal roof and fascia (Multiple colors)
- Removable hitch
- 6 hurricane tie downs
- 4" to 10" eaves per print
- Fiberon composite decking
- A/C disconnect
- GFCI outlet
- Frost free water faucet
- Deck per print
- Painted rebar railing
- Stained deck railing and posts



# MEADOWLARK



The Meadowlark Park Model exemplifies smart living in a compact footprint. This thoughtfully designed unit features an airy main living area, a practical kitchenette, a well-appointed bathroom, and a charming deck, offering a harmonious blend of indoor comfort and outdoor enjoyment.

*Additional Options Available*





## Energy Saving Features

- R-14 2" spray foam in floor, walls, and ceiling
- Anderson 100 series windows (Multiple Colors)
- Ductless energy efficient AC/Heat
- Vapor barrier on roof and walls





## Interior Features

- 100-amp electrical service
- 18 cu ft refrigerator/freezer
- Microwave
- 27 cu ft electric range, or induction cooktop
- 20 gallon water heater
- One piece shower
- Smoke detectors
- Fire extinguisher
- LED recessed lighting
- Exterior porch lights
- Accent lighting
- Porcelain residential toilet
- Luxury vinyl plank flooring (Multiple colors)
- T&G or shiplap on walls and ceiling (Multiple colors)
- Stained and sealed 1" x 4" trim (Multiple colors)
- Solid pine interior doors
- Delta brand faucets
- Bath vanity per print
- Kitchen per print (Multiple colors)
- Black single basin kitchen sink
- Laminate kitchen counter (Multiple colors)
- Optional stackable washer/dryer hookups







## Cabin Rules:

Watch the sunrise,

Take long walks,

Sit on the porch,

Breathe deeply,

Relax & unwind,

Look at the stars,

Enjoy the fresh air!



**800-655-5322**

**TrailsideStructures.com**

**Sales@TrailsideStructures.com**