

PARK MODEL CATALOGUE



 **Trailside**  
STRUCTURES, LLC

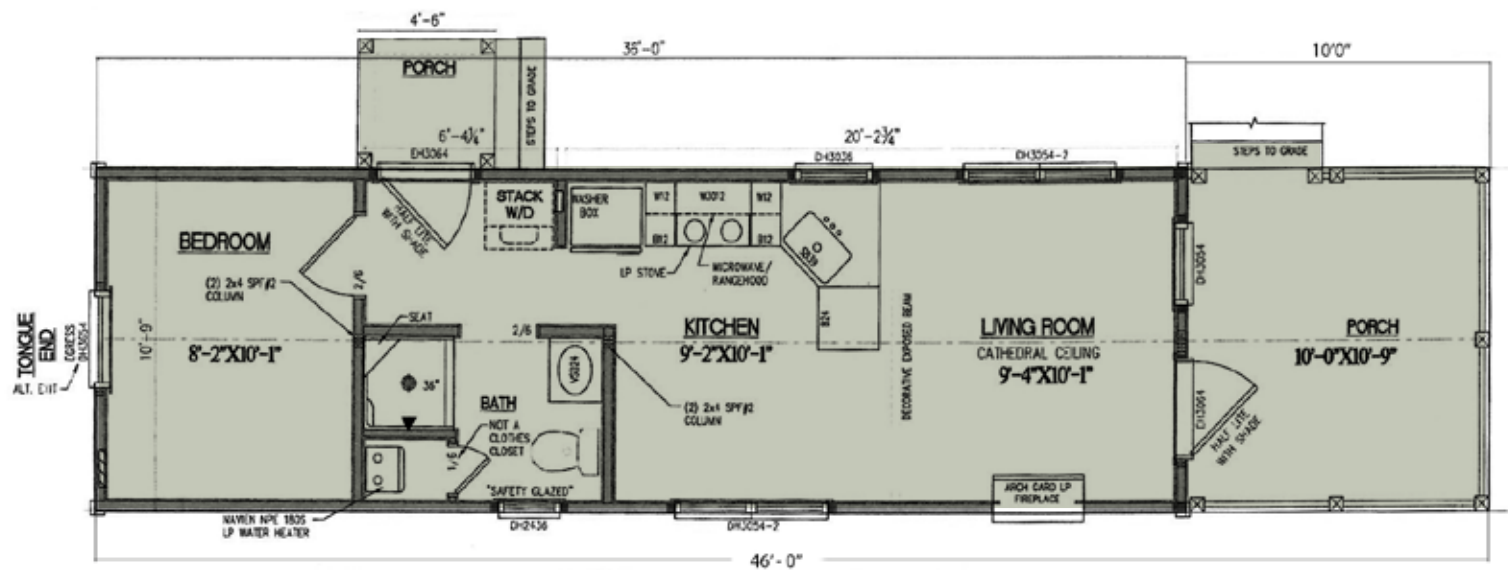




**Trailside Structures** is a family owned company, dedicated to providing cabins with the convenience of a portable structure, while maintaining a high level of quality and value. We started with basic cabins and over the years we have added many options, including kitchens, bathrooms and bedrooms in a goal to provide a turnkey cabin. We specialize in building custom, so feel free to present your ideas, we look forward to working with you.



# SANTA ROSA



The Santa Rosa offers an expansive living space, artfully balancing roominess with cozy comfort. This park model features a well-appointed kitchen, a serene bedroom, and a welcoming porch, creating an ideal retreat for those seeking a home that's both spacious and intimate.

*Additional Options Available.*

## SANTA ROSA



10'9" x 46'0" with 10' x 10'9" Porch Shown with: Red Vinyl Siding, 6 Lite Windows, Door with Built-in Blinds, White Vinyl Railing, & Grey Decking

### Standard Features

- 2" x 4" walls with 1/2" OSB & Housewrap
- Your choice of log or LP lap siding with choice of stain
- 2" x 6" floor joist with 3/4" T&G flooring
- R-13 Insulation on walls
- R-19 Insulation on ceiling
- R14 Spray foam with rodent-proof on floor
- T&G knotty pine interior with clear stain
- Pine trim & moldings with clear stain
- Vinyl plank flooring with wood look
- Pressure treated railing stained with color of choice
- Porch Trex decking color of your choice
- All windows are clay with prairie grids
- Half-lite pre-hung doors
- Pine kitchen cabinets with clear stain
- Formica countertop with your choice of color
- 24" Pine vanity with clear stain
- Electrical package includes 100 amp service with receptacles and lights per code
- 20 gallon water heater
- 36" shower unit
- Single zone mini split
- Fire extinguisher

### Options Available

- Range Coil Top Stove, Refrigerator, and Microwave with Hood

## APPALACHIAN



11'8" x 42'6" with 11'8" x 10' Porch Shown with: Chestnut Brown LP Lap Siding, Aluminum Railings, Brown Decking, & Full Lite Pre-hung Door

### Standard Features

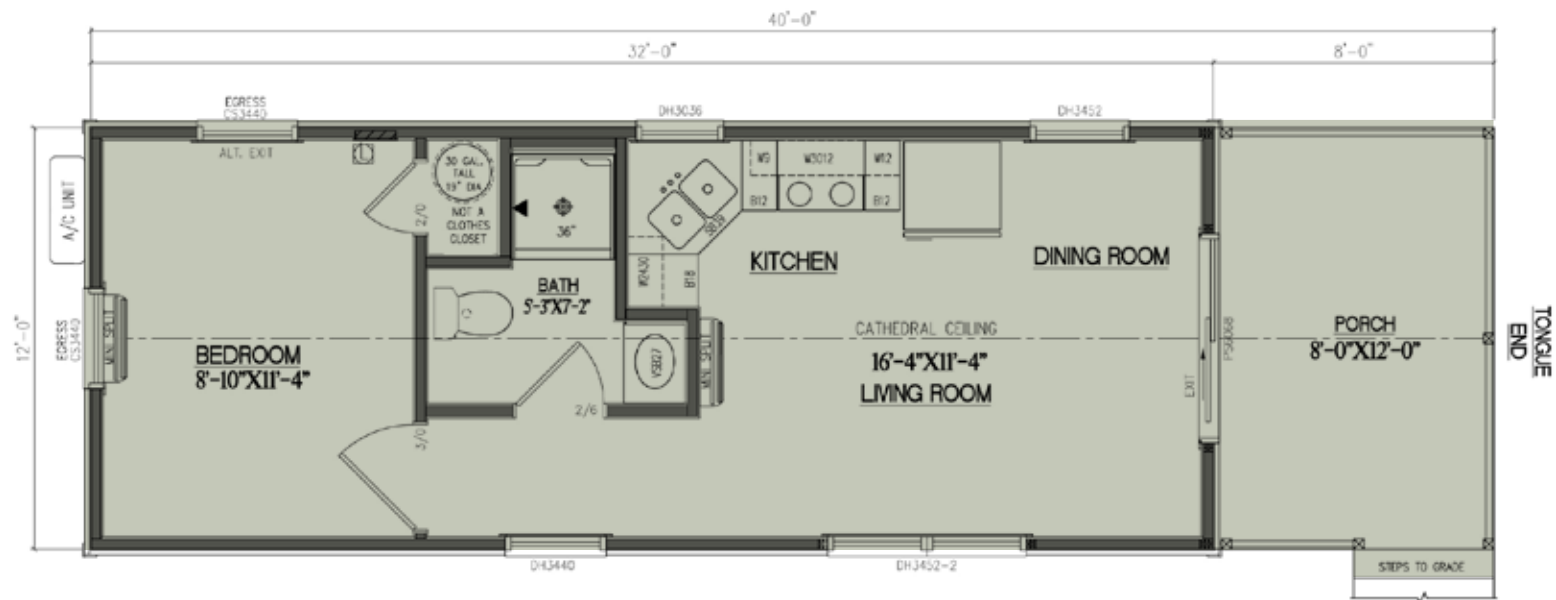
- 2" x 4" walls with 1/2" OSB & Housewrap
- Your choice of log or LP lap siding with choice of stain
- 2" x 6" floor joist with 3/4" T&G flooring
- R-13 Insulation on walls
- R-19 Insulation on ceiling
- R14 Spray foam with rodent-proof on floor
- T&G knotty pine interior with clear stain
- Pine trim & moldings with clear stain
- Vinyl plank flooring with wood look
- Pressure treated railing stained with color of choice
- Porch Trex decking color of your choice
- All windows are clay with prairie grids
- Half-lite pre-hung doors
- Pine kitchen cabinets with clear stain
- Formica countertop with your choice of color
- 24" Pine vanity with clear stain
- Electrical package includes 100 amp service with receptacles and lights per code
- 20 gallon water heater
- 36" shower unit
- Single zone mini split
- Fire extinguisher

### Options Available

- Range Coil Top Stove, Refrigerator, and Microwave with Hood



# LAKE PORT



The Lake Port is a versatile retreat designed for those who appreciate spacious outdoor living combined with cozy interiors. This park model cabin, featuring a generous porch, offers a perfect balance of indoor comfort and outdoor enjoyment, ideal for nature enthusiasts and relaxation seekers alike.

*Additional Options Available.*





**LAKE PORT**

12' x 40' with 12' x 8' Porch.

Shown with: Redwood Log Siding, Brown Decking, & Full Lite Pre-hung Door

### Standard Features

- 2" x 4" walls with 1/2" OSB & Housewrap
- Your choice of log or LP lap siding with choice of stain
- 2" x 6" floor joist with 3/4" T&G flooring
- R-13 Insulation on walls
- R-19 Insulation on ceiling
- R14 Spray foam with rodent-proof on floor
- T&G knotty pine interior with clear stain
- Pine trim & moldings with clear stain
- Vinyl plank flooring with wood look
- Pressure treated railing stained with color of choice
- Porch Trex decking color of your choice
- All windows are clay with prairie grids
- Half-lite pre-hung doors
- Pine kitchen cabinets with clear stain
- Formica countertop with your choice of color
- 24" Pine vanity with clear stain
- Electrical package includes 100 amp service with receptacles and lights per code
- 20 gallon water heater
- 36" shower unit
- Single zone mini split
- Fire extinguisher

### Options Available

- Range Coil Top Stove, Refrigerator, and Microwave with Hood

## PINE CONE



11'8" x 42'6" with 10' Porch

Shown with: Chestnut Brown LP Lap Siding, Aluminum Railing, Brown Decking, & Sliding Glass Door

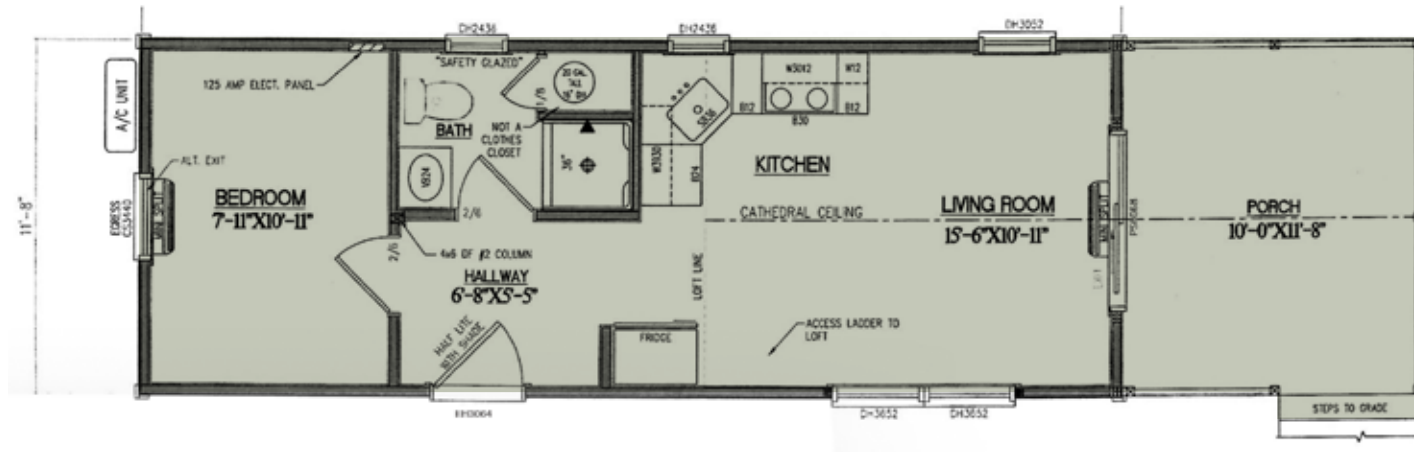
### Standard Features

- 2" x 4" walls
- Your choice of log or LP lap siding with choice of stain
- 2" x 6" floor joist
- R-13 Insulation on walls
- R-13 Insulation on ceiling
- R14 Spray foam with rodent-proof on floor
- 1" x 8" T&G knotty pine interior with clear stain
- Pressure treated railing stained with color of choice
- Porch Trex decking color of your choice
- Pine trim & moldings with clear stain
- Vinyl plank flooring with wood look
- All windows are clay with prairie grids
- Half-lite pre-hung doors
- Electrical package includes 100 amp service

### Options Available

- Range Coil Top Stove, Refrigerator, and Microwave with Hood

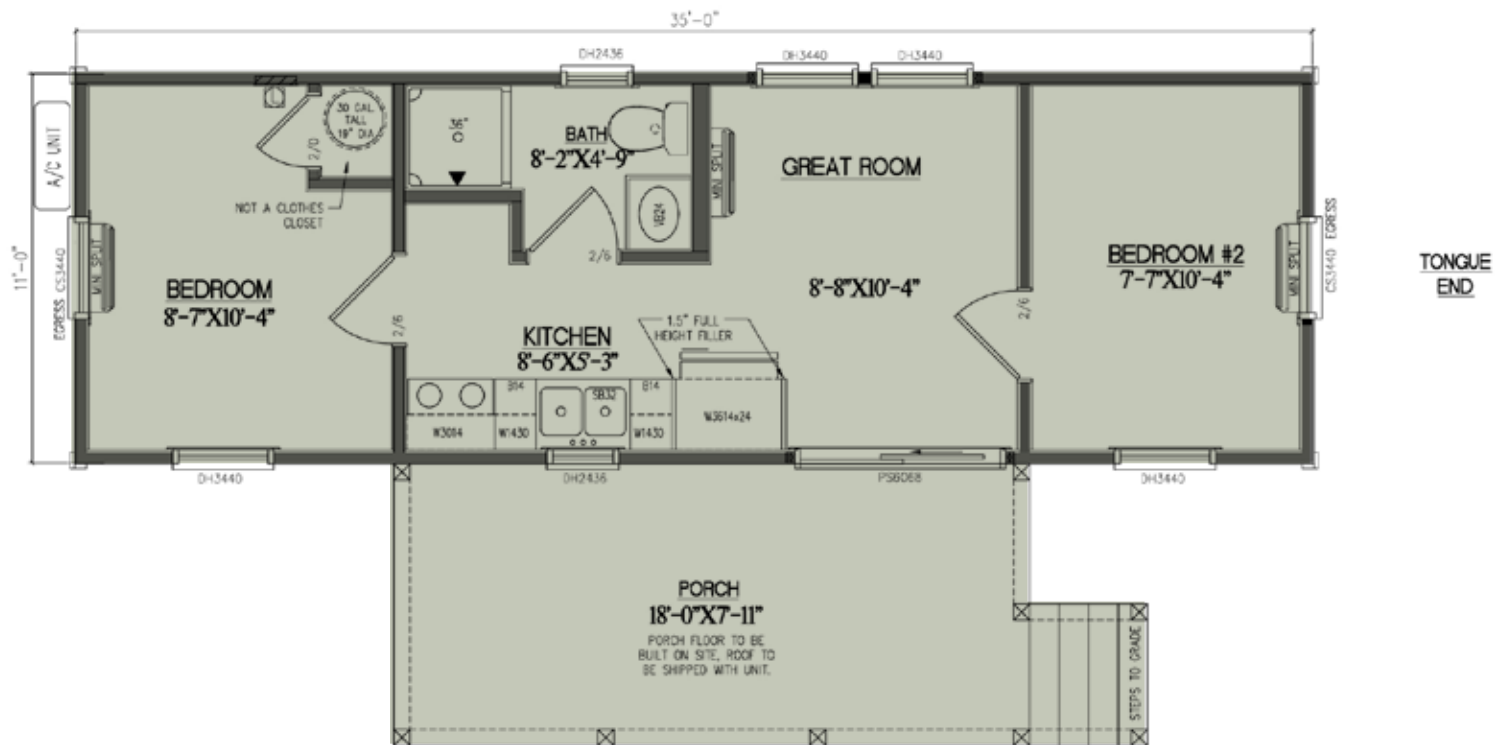
# PINE CONE



The Pine Cone Cabin is perfect for those who appreciate the charm of nature combined with modern comforts. This park model cabin features a spacious porch, a fully equipped kitchen, a modern bathroom, a cozy bedroom, and versatile living spaces, providing an ideal retreat for relaxation and enjoyment.

*Additional Options Available.*

# RIVERVIEW



The Riverview Cabin is perfect for anyone who loves the peace of nature without giving up modern comforts. With a big porch that's great for enjoying the view, a fully equipped kitchen, a modern bathroom, and two cozy bedrooms, this park model cabin combines comfort and rustic charm. It's the ideal spot for a relaxing getaway.

*Additional Options Available.*



## RIVERVIEW

11' x 35' with 8' x 18' Porch.

Shown with: Log Siding & Sliding Glass Door

### Standard Features

- 2" x 4" walls with 1/2" OSB & Housewrap
- Your choice of log or LP lap siding with choice of stain
- 2" x 6" floor joist with 3/4" T&G flooring
- R-13 Insulation on walls
- R-19 Insulation on ceiling
- R14 Spray foam with rodent-proof on floor
- T&G knotty pine interior with clear stain
- Pine trim & moldings with clear stain
- Vinyl plank flooring with wood look
- Pressure treated railing stained with color of choice
- Porch Trex decking color of your choice
- All windows are clay with prairie grids
- Half-lite pre-hung doors
- Pine kitchen cabinets with clear stain
- Formica countertop with your choice of color
- 24" Pine vanity with clear stain
- Electrical package includes 100 amp service with receptacles and lights per code
- 20 gallon water heater
- 36" shower unit
- Single zone mini split
- Fire extinguisher

### Options Available

- Range Coil Top Stove, Refrigerator, and Microwave with Hood

## CAPE MAY



11' x 35' with Steps

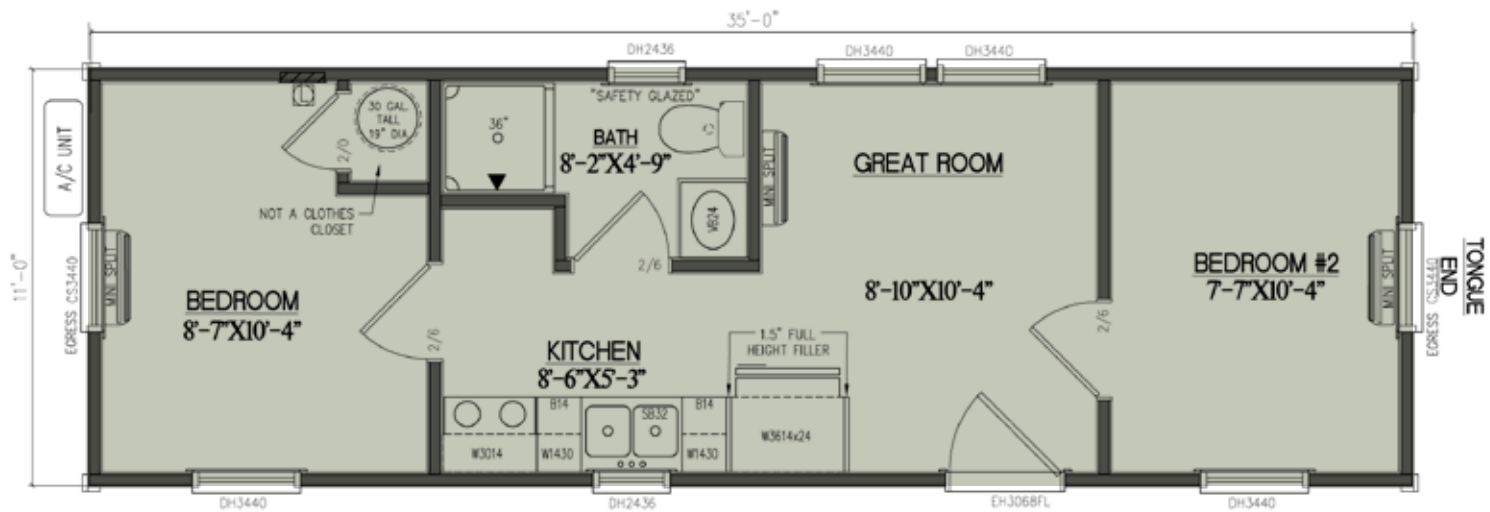
### Standard Features

- 2" x 4" walls with 1/2" OSB & Housewrap
- Your choice of log or LP lap siding with choice of stain
- 2" x 6" floor joist with 3/4" T&G flooring
- R-13 Insulation on walls
- R-19 Insulation on ceiling
- R14 Spray foam with rodent-proof on floor
- T&G knotty pine interior with clear stain
- Pine trim & moldings with clear stain
- Vinyl plank flooring with wood look
- All windows are clay with prairie grids
- Half-lite glass Pre-hung door
- Pine kitchen cabinets with clear stain
- Formica countertop with choice of color
- 24" Pine vanity with clear stain
- Electrical package includes 100 amp service with receptacles and lights per code
- 20 gallon water heater
- 36" shower unit
- Single zone mini split
- Fire extinguisher

### Options Available

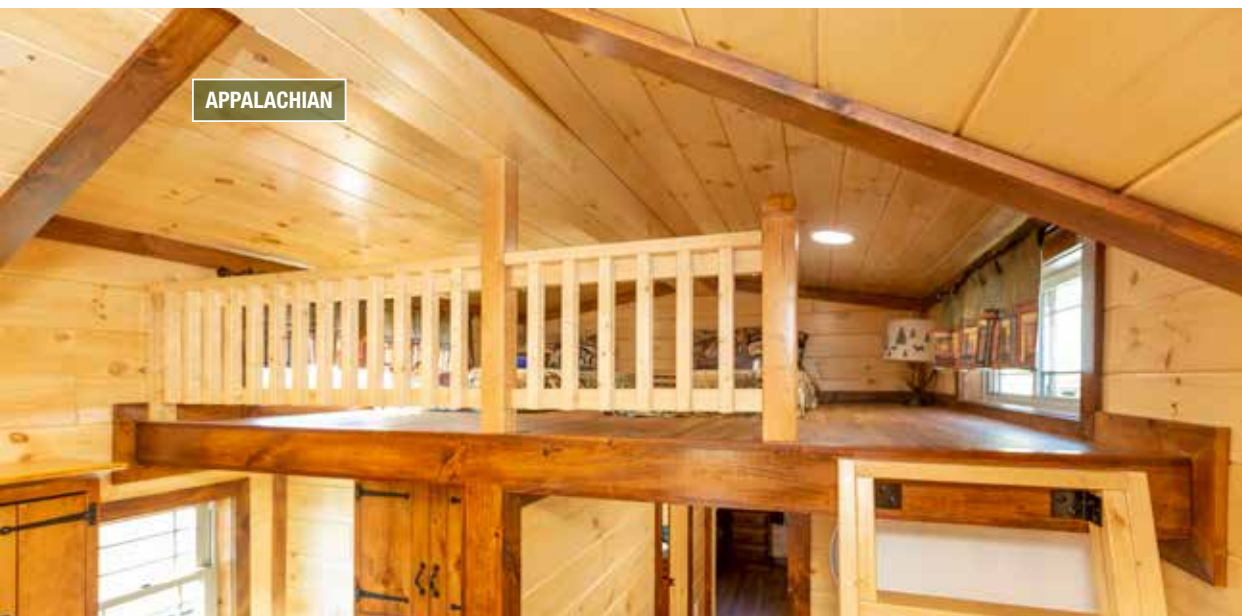
- Range Coil Top Stove, Refrigerator, and Microwave with Hood

# CAPE MAY



The Cape May is designed for those seeking a cozy retreat with modern amenities. This park model cabin features two bedrooms, a spacious great room, fully equipped kitchen, and a modern bathroom, offering the perfect blend of comfort and functionality.

*Additional Options Available.*













## Cabin Rules:

Watch the sunrise,

Take long walks,

Sit on the porch,

Breathe deeply,

Relax & unwind,

Look at the stars,

Enjoy the fresh air!



**800-655-5322**

**TrailsideStructures.com**

Sales@TrailsideStructures.com