

PARK MODEL CATALOGUE



 **Trailside**
STRUCTURES, LLC

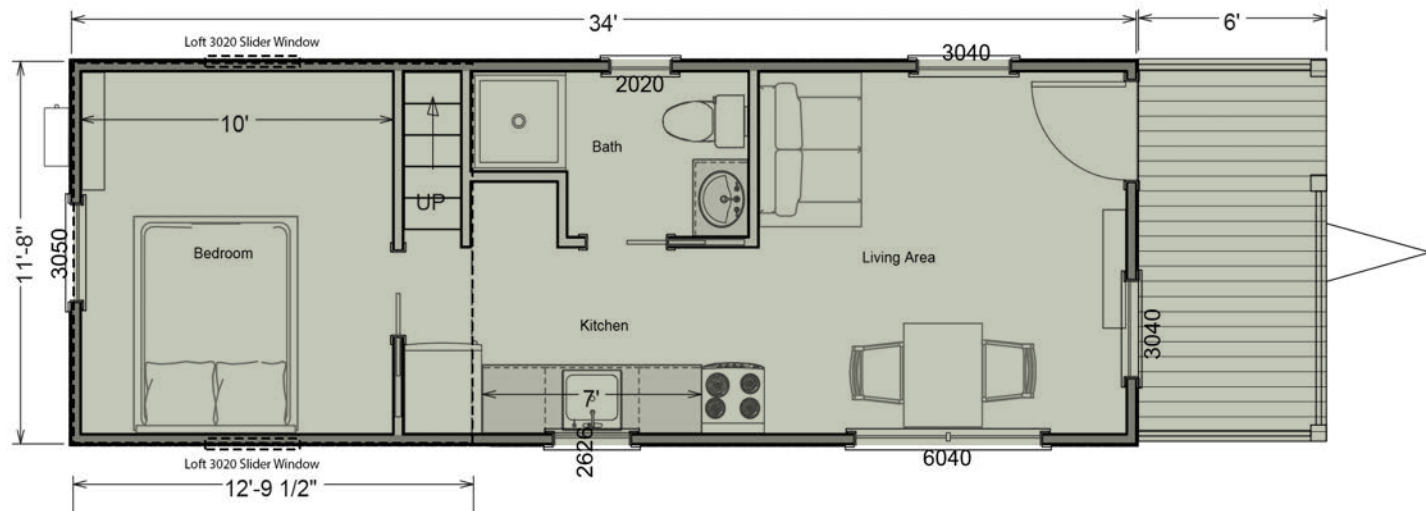




Trailside Structures is a family owned company, dedicated to providing cabins with the convenience of a portable structure, while maintaining a high level of quality and value. We started with basic cabins and over the years we have added many options, including kitchens, bathrooms and bedrooms in a goal to provide a turnkey cabin. We specialize in building custom, so feel free to present your ideas, we look forward to working with you.



1889



The 1889 Park Model is an ingenious blend of compact living and spacious design. This cabin features a clever loft space, open-concept living area, well-equipped kitchen, comfortable bedroom, and a generous sized porch, offering a versatile retreat for those who appreciate efficient yet roomy accommodations.

Additional Options Available



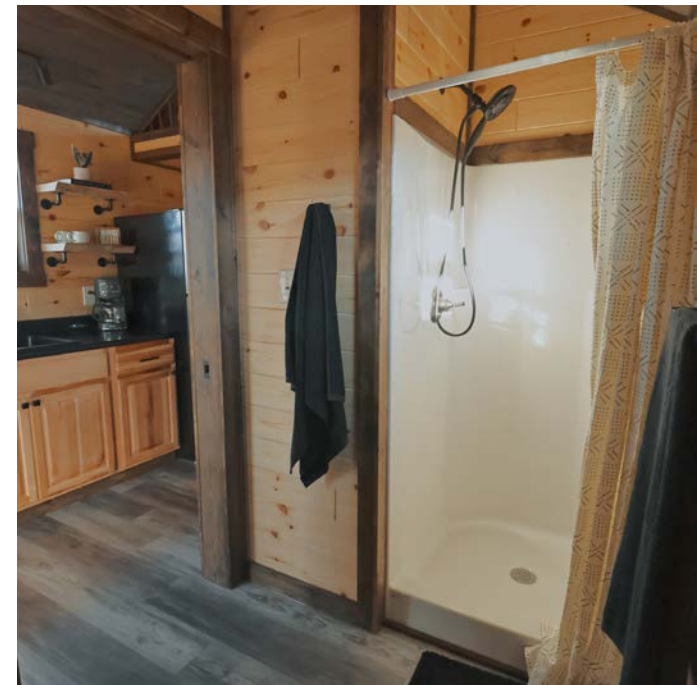
34' x 11'8" with 6' Porch

1889 Structural Exterior

- Treated 2" X 6" Floor Joists 24" O/C Sheeted With $\frac{3}{4}$ " Subfloor
- Walls 2" X 4" 16" O/C Sheeted With $\frac{7}{16}$ " OSB
- Roof Designed For 60 Lb Snow Load, Higher Snow Load Available
- LP Lap Siding Or Board & Batton Accent Walls / Print (Multiple Colors)
- Rugged Rib Metal Roof And Fascia (Multiple Colors)
- Removable Hitch
- 6 Hurricane Tie Downs
- 4" To 10" Eaves Per Print
- Fiberon Composite Decking
- A/C Disconnect
- GFCI Outlet
- Frost Free Water Faucet
- Deck Per Print
- Painted Rebar Railing
- Stained Deck Railing And Posts

1889 Interior Features

- 100-Amp Electrical Service
- 18 Cu Ft Refrigerator/Freezer
- Microwave
- 27 Cu Ft Electric Range, Or Induction Cooktop
- 20 Gallon Water Heater
- One Piece Shower
- Smoke Detectors
- Fire Extinguisher
- LED Recessed Lighting
- Exterior Porch Lights
- Accent Lighting
- Porcelain Residential Toilet
- Luxury Vinyl Plank Flooring (Multiple Colors)
- T&G Or Shiplap On Walls And Ceiling (Multiple Colors)
- Stained And Sealed 1" X 4" Trim (Multiple Colors)
- Solid Pine Interior Doors
- Delta Brand Faucets
- Bath Vanity Per Print
- Kitchen Per Print (Multiple Colors)
- Black Single Basin Kitchen Sink
- Laminate Kitchen Counter (Multiple Colors)
- Optional Stackable Washer/Dryer Hookups



Energy Saving Features

- R-14 2" Closed Cell Spray Foam In Floor, Walls, And Ceiling
- Anderson 100 Series Windows (Multiple Colors)
- Ductless Energy Efficient AC/Heat
- Vapor Barrier On Roof And Walls





Meadowlark Structural Exterior

- Treated 2" X 6" Floor Joists 24" O/C Sheeted With ¾" Subfloor
- Walls 2" X 4" 16" O/C Sheeted With 7/16" OSB
- Roof Designed For 60 Lb Snow Load, Higher Snow Load Available
- LP Lap Siding Or Board & Batton Accent Walls / Print (Multiple Colors)
- Rugged Rib Metal Roof And Fascia (Multiple Colors)
- Removable Hitch
- 6 Hurricane Tie Downs
- 4" To 10" Eaves Per Print
- Fiberon Composite Decking
- A/C Disconnect
- GFCI Outlet
- Frost Free Water Faucet
- Deck Per Print
- Painted Rebar Railing
- Stained Deck Railing And Posts

MEADOWLARK



The Meadowlark Park Model exemplifies smart living in a compact footprint. This thoughtfully designed unit features an airy main living area, a practical kitchenette, a well-appointed bathroom, and a charming deck, offering a harmonious blend of indoor comfort and outdoor enjoyment.

Additional Options Available



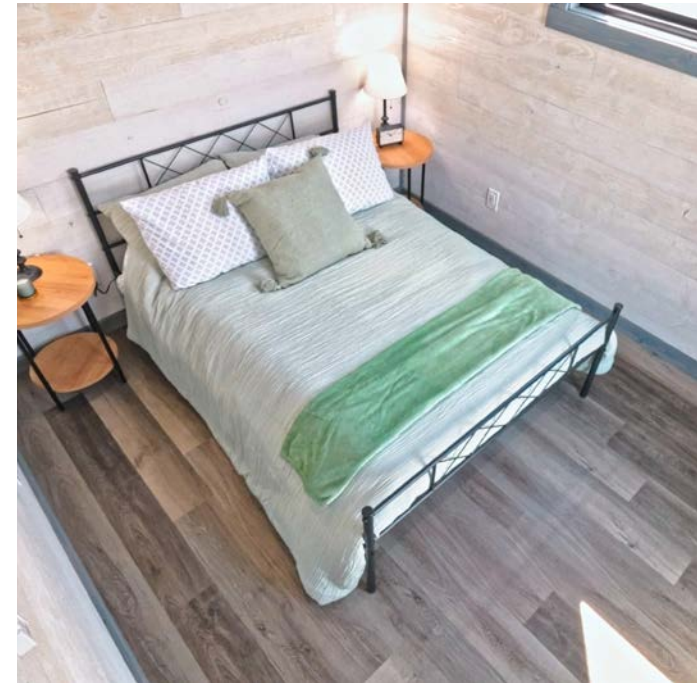
Energy Saving Features

- R-14 2" Closed Cell Spray Foam In Floor, Walls, And Ceiling
- Anderson 100 Series Windows (Multiple Colors)
- Ductless Energy Efficient AC/Heat
- Vapor Barrier On Roof And Walls

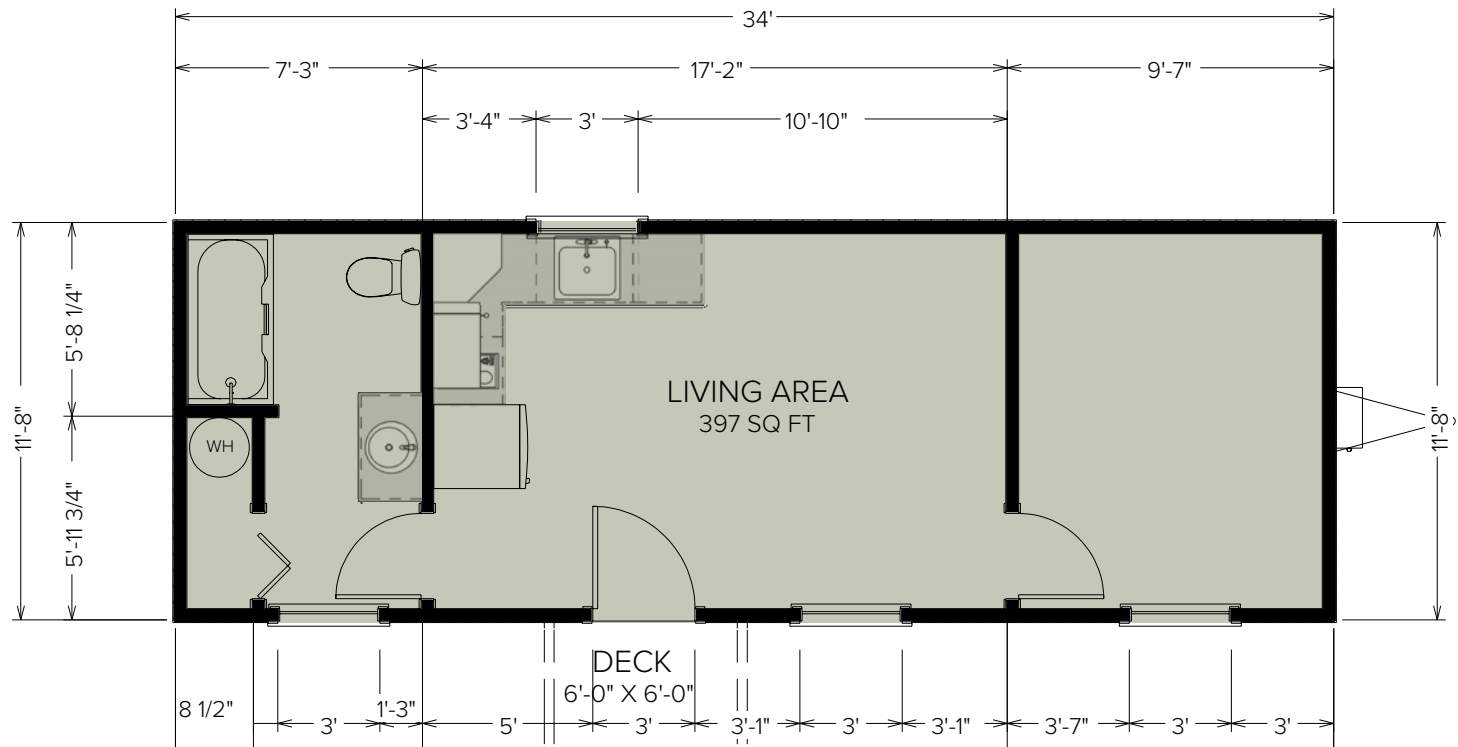


Meadowlark Interior Features

- 100-Amp Electrical Service
- 18 Cu Ft Refrigerator/Freezer
- Microwave
- 27 Cu Ft Electric Range, Or Induction Cooktop
- 20 Gallon Water Heater
- One Piece Shower
- Smoke Detectors
- Fire Extinguisher
- LED Recessed Lighting
- Exterior Porch Lights
- Accent Lighting
- Porcelain Residential Toilet
- Luxury Vinyl Plank Flooring (Multiple Colors)
- T&G Or Shiplap On Walls And Ceiling (Multiple Colors)
- Stained And Sealed 1" X 4" Trim (Multiple Colors)
- Solid Pine Interior Doors
- Delta Brand Faucets
- Bath Vanity Per Print
- Kitchen Per Print (Multiple Colors)
- Black Single Basin Kitchen Sink
- Laminate Kitchen Counter (Multiple Colors)
- Optional Stackable Washer/Dryer Hookups



CASCADE



The Cascade gives you a smart 34' x 11'8" living space that's both compact and comfortable. The open-concept living area includes a fully equipped kitchen and defined dining space, while a private bedroom and full bath provide all the comforts of home. It's perfect for weekend getaways, nature lovers, and anyone looking to simplify their life.

Additional Options Available



34' x 11'8" with No Porch; or Optional 6' X 6' Deck With Stained Posts & Painted Rebar Railing**

Cascade Structural Exterior

- 34' X 11'8" Structure
- Rugged Rib Metal Roof And Fascia (Multiple Color Options)
- LP Lap Siding Or Board & Batten Accent Siding (Multiple Colors)
- Treated 2" X 6" Floor Joists @ 24" O/C With ¾" Subfloor
- 2" X 4" Walls @ 16" O/C With 7/16" OSB Sheathing
- Roof Designed For 60 Lb. Snow Load (Higher Loads Available)
- 4" To 10" Eaves (Depending On Floor Plan)
- Removable Hitch
- 6 Hurricane Tie-Downs
- GFCI Outlet
- Frost-Free Water Faucet
- Exterior A/C Disconnect

** Deck Is Not Included In Base Model And Must Be Ordered Separately

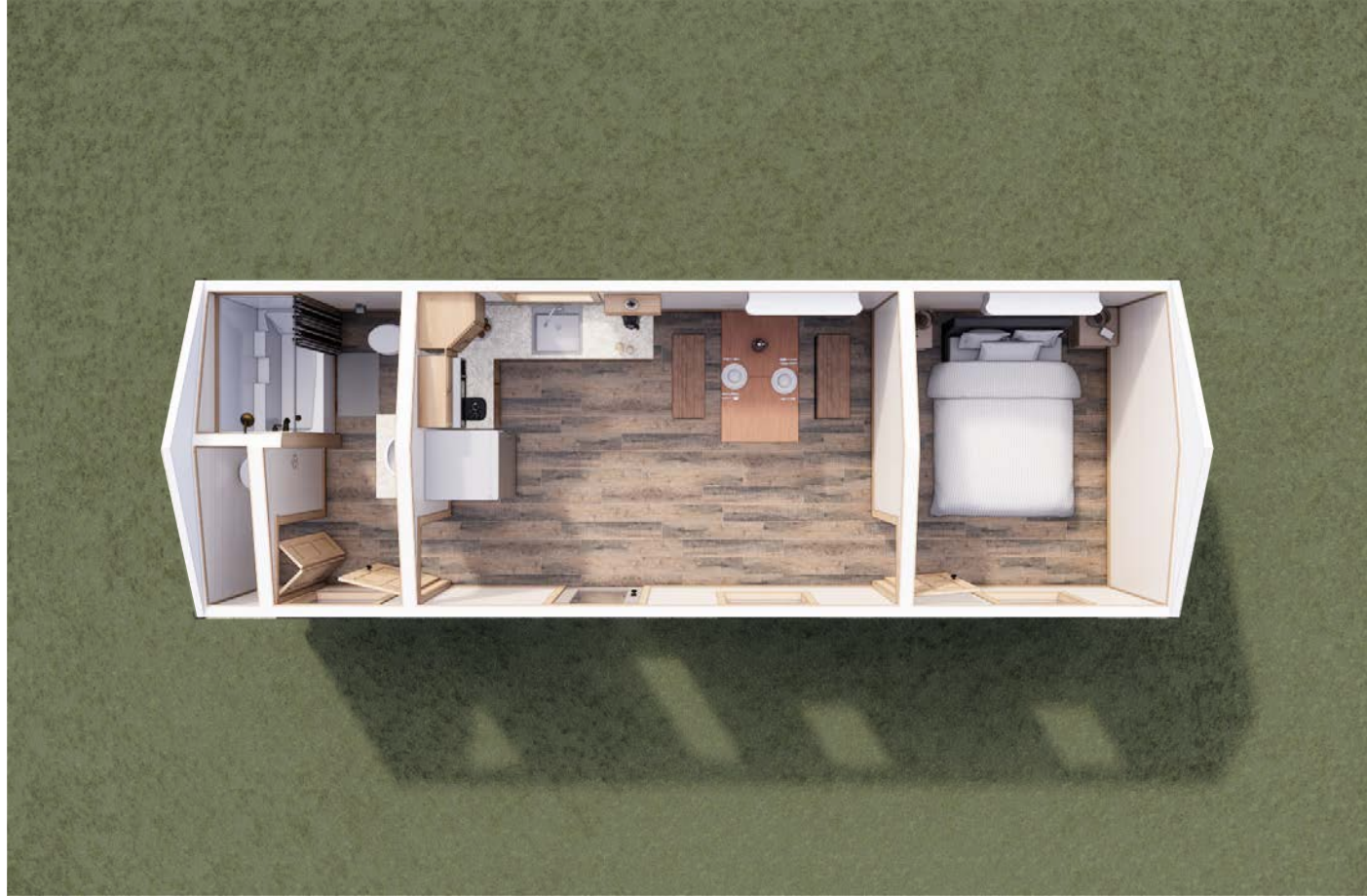
Cascade Interior Features

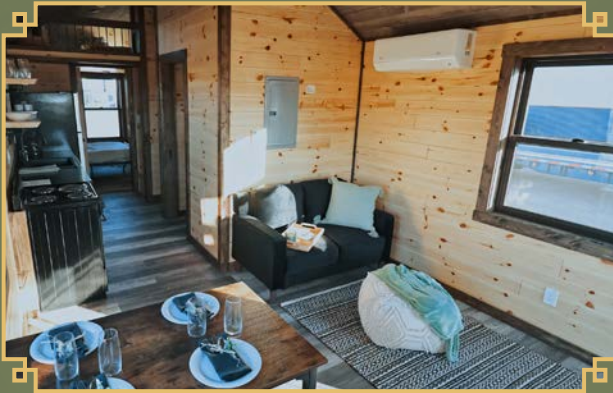
- 100-Amp Electric Service
- 18 Cu. Ft. Fridge/Freezer
- Microwave
- 27" Electric Range Or Induction Cook-Top
- 20 Gallon Electric Water Heater
- One Piece Shower
- Smoke Detectors
- Fire Extinguisher
- LED Recessed Lights
- Accent Lighting
- Porcelain Residential Toilet
- Luxury Vinyl Plank Flooring (Multiple Colors)
- T&G Or Shiplap Walls & Ceiling (Multiple Finishes)
- Stained And Sealed 1" X 4" Trim (Multiple Colors)
- Solid Pine Interior Doors
- Black Single Basin Kitchen Sink
- Laminate Countertops (Multiple Color Options)
- Delta Brand Faucets



Energy Saving Features

- R-14 2" Closed Cell Spray Foam In Floor, Walls, And Ceiling
- Anderson 100 Series Windows (Multiple Colors)
- Ductless Energy Efficient AC/Heat
- Vapor Barrier On Roof And Walls





Cabin Rules:

Watch the sunrise,

Take long walks,

Sit on the porch,

Breathe deeply,

Relax & unwind,

Look at the stars,

Enjoy the fresh air!



800-655-5322

TrailsideStructures.com

Sales@TrailsideStructures.com