

PARK MODEL CATALOGUE



 **Trailside**
STRUCTURES, LLC

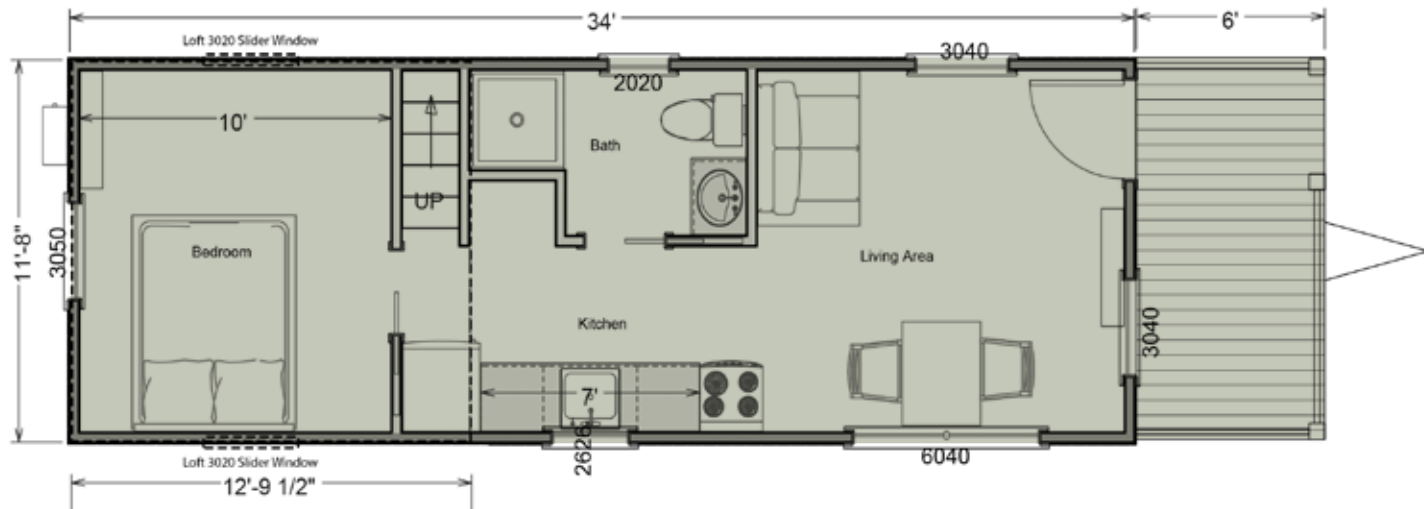




Trailside Structures is a family owned company, dedicated to providing cabins with the convenience of a portable structure, while maintaining a high level of quality and value. We started with basic cabins and over the years we have added many options, including kitchens, bathrooms and bedrooms in a goal to provide a turnkey cabin. We specialize in building custom, so feel free to present your ideas, we look forward to working with you.



1889



The 1889 Park Model is an ingenious blend of compact living and spacious design. This cabin features a clever loft space, open-concept living area, well-equipped kitchen, comfortable bedroom, and a generous sized porch, offering a versatile retreat for those who appreciate efficient yet roomy accommodations.

Additional Options Available



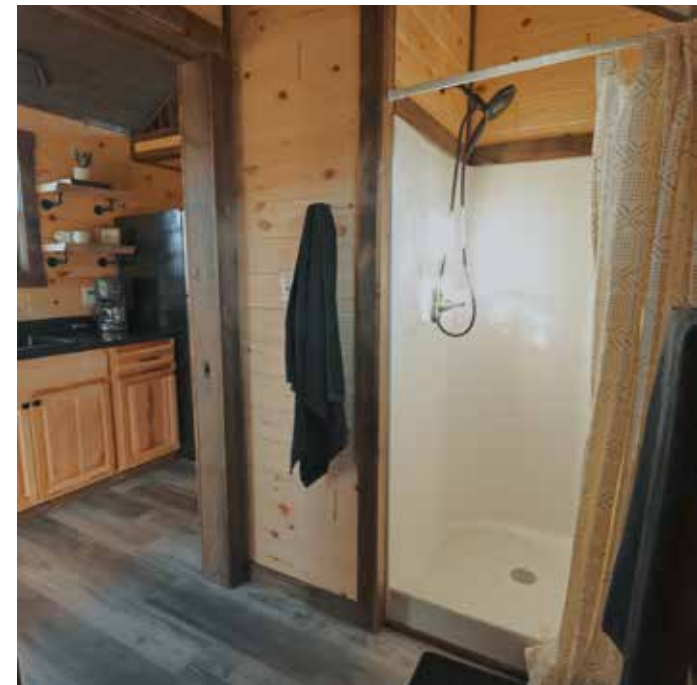
34' x 11'8" with 6' Porch

Structural Exterior

- Treated 2" x 6" floor joists 24" o/c sheathed with ¾" subfloor
- Walls 2" x 4" 16" o/c sheathed with 7/16" OSB
- Roof designed for 60 lb snow load, Higher snow load available
- LP lap siding or Board & Batton Accent walls per print (Multiple colors)
- Rugged rib metal roof and fascia (Multiple colors)
- Removable hitch
- 6 hurricane tie downs
- 4" to 10" eaves per print
- Fiberon composite decking
- A/C disconnect
- GFCI outlet
- Frost free water faucet
- Deck per print
- Painted rebar railing
- Stained deck railing and posts

Interior Features

- 100-amp electrical service
- 18 cu ft refrigerator/freezer
- Microwave
- 27 cu ft electric range, or induction cooktop
- 20 gallon water heater
- One piece shower
- Smoke detectors
- Fire extinguisher
- LED recessed lighting
- Exterior porch lights
- Accent lighting
- Porcelain residential toilet
- Luxury vinyl plank flooring (Multiple colors)
- T&G or shiplap on walls and ceiling (Multiple colors)
- Stained and sealed 1" x 4" trim (Multiple colors)
- Solid pine interior doors
- Delta brand faucets
- Bath vanity per print
- Kitchen per print (Multiple colors)
- Black single basin kitchen sink
- Laminate kitchen counter (Multiple colors)
- Optional stackable washer/dryer hookups



Energy Saving Features

- R-14 2" spray foam in floor, walls, and ceiling
- Anderson 100 series windows (Multiple Colors)
- Ductless energy efficient AC/Heat
- Vapor barrier on roof and walls



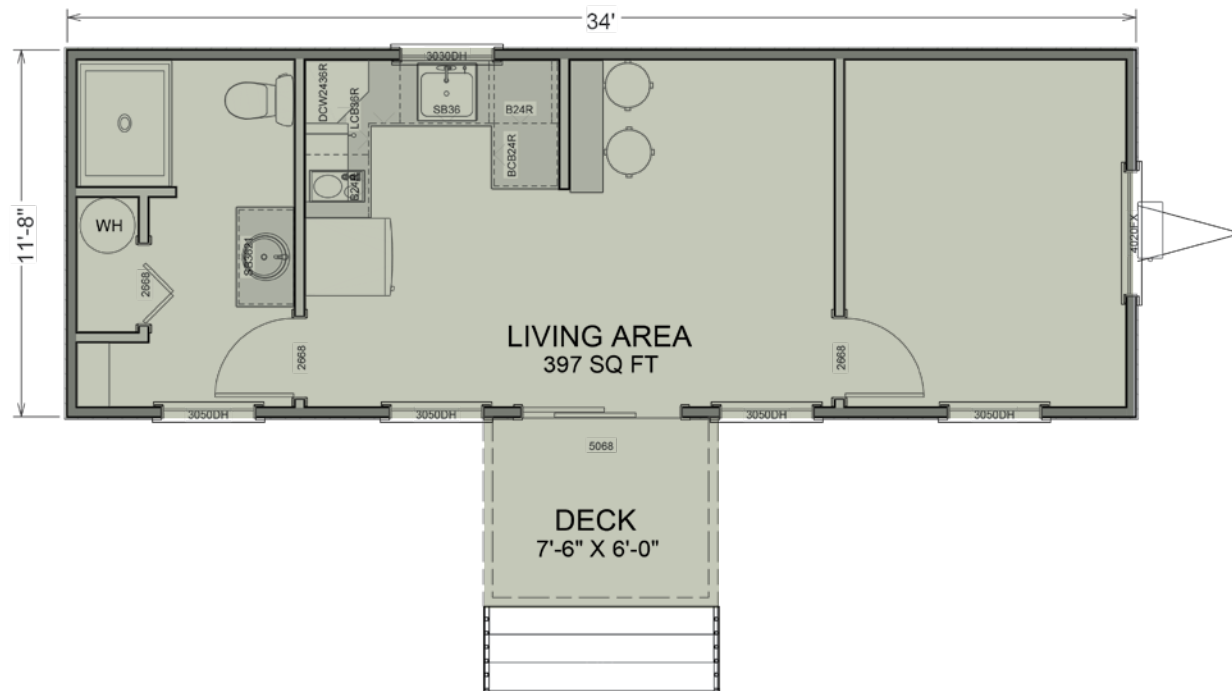


34' x 11'8" with 7'6" x 6'0" Deck

Structural Exterior

- Treated 2" x 6" floor joists 24" o/c sheathed with ¾" subfloor
- Walls 2" x 4" 16" o/c sheathed with 7/16" OSB
- Roof designed for 60 lb snow load, Higher snow load available
- LP lap siding or Board & Batton Accent walls per print (Multiple colors)
- Rugged rib metal roof and fascia (Multiple colors)
- Removable hitch
- 6 hurricane tie downs
- 4" to 10" eaves per print
- Fiberon composite decking
- A/C disconnect
- GFCI outlet
- Frost free water faucet
- Deck per print
- Painted rebar railing
- Stained deck railing and posts

MEADOWLARK



The Meadowlark Park Model exemplifies smart living in a compact footprint. This thoughtfully designed unit features an airy main living area, a practical kitchenette, a well-appointed bathroom, and a charming deck, offering a harmonious blend of indoor comfort and outdoor enjoyment.

Additional Options Available



Energy Saving Features

- R-14 2" spray foam in floor, walls, and ceiling
- Anderson 100 series windows (Multiple Colors)
- Ductless energy efficient AC/Heat
- Vapor barrier on roof and walls



Interior Features

- 100-amp electrical service
- 18 cu ft refrigerator/freezer
- Microwave
- 27 cu ft electric range, or induction cooktop
- 20 gallon water heater
- One piece shower
- Smoke detectors
- Fire extinguisher
- LED recessed lighting
- Exterior porch lights
- Accent lighting
- Porcelain residential toilet
- Luxury vinyl plank flooring (Multiple colors)
- T&G or shiplap on walls and ceiling (Multiple colors)
- Stained and sealed 1" x 4" trim (Multiple colors)
- Solid pine interior doors
- Delta brand faucets
- Bath vanity per print
- Kitchen per print (Multiple colors)
- Black single basin kitchen sink
- Laminate kitchen counter (Multiple colors)
- Optional stackable washer/dryer hookups





Cabin Rules:

Watch the sunrise,

Take long walks,

Sit on the porch,

Breathe deeply,

Relax & unwind,

Look at the stars,

Enjoy the fresh air!



800-655-5322

TrailsideStructures.com

Sales@TrailsideStructures.com